



STUDIO 3

MARY CLAIRE ROSSETTI
PROF. GONANO
INDS 320

TABLE OF CONTENTS



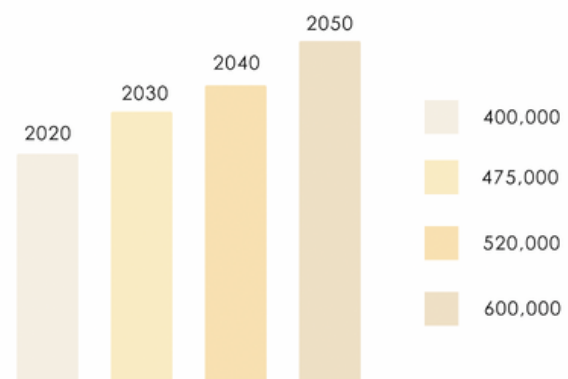
SITE AND BUILDING:	3 – 4
CLIENT:	5 – 6
USER EXPERIENCE:	7 – 12
CONCEPT:	13 – 15
SCHEMATIC DESIGN:	16 – 23
DESIGN DEVELOPMENT:	24 – 36
SPECIFICATIONS:	37 – 51

S I T E & B U I L D I N G

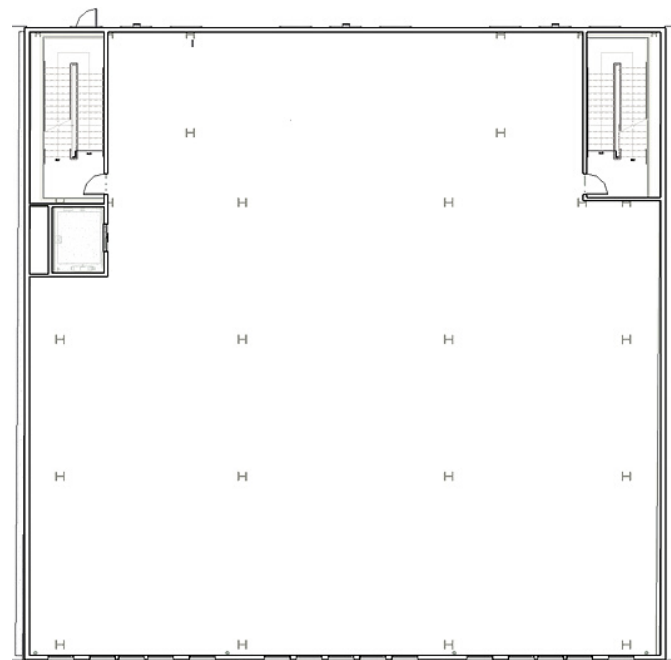


240 W. BROUGHTON STREET
SAVANNAH, GA 31401

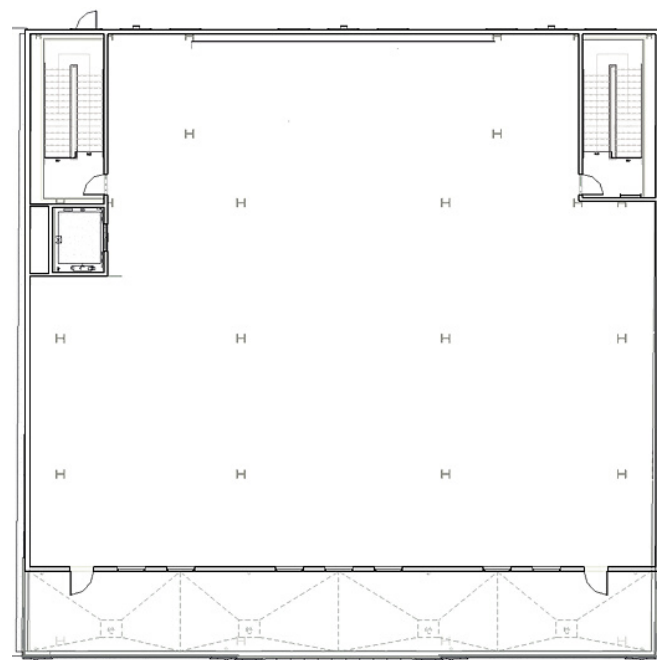
SIZE OF POPULATION AND POTENTIAL FOR EXPANSION



POPULATION OF SAVANNAH: 393,353 PEOPLE



THIRD FLOOR
8,077 SQ. FT



FOURTH FLOOR
6,667 SQ. FT



EXTERIOR VIEW
MATERIAL: WHITE STUCCO

CLIENT



SINCE FOUNDING IN 1999 THE INSIGHT & REGROUP TEAM HAS WORKED WITH VIGOROUS INTENT TO PROVIDE CARE VIA TELE PSYCHIATRY AT PHENOMENAL RATES.

IN JANUARY OF 2021, THE TEAM TOOK THE NEW NAME ARRAY BEHAVIORAL CARE. ARRAY WORKS AS THE LARGEST TELE PSYCHIATRY PROVIDER IN THE COUNTRY PARTNERING WITH HUNDREDS OF HEALTH SYSTEMS.

DOING SO, THE ARRAY TEAM WORKS TO EXPAND ACCESS TO CARE DEFINING A NEW STANDARD FOR TELE HEALTH IN A INNOVATIVE AND TRANSFORMATIVE WAY.

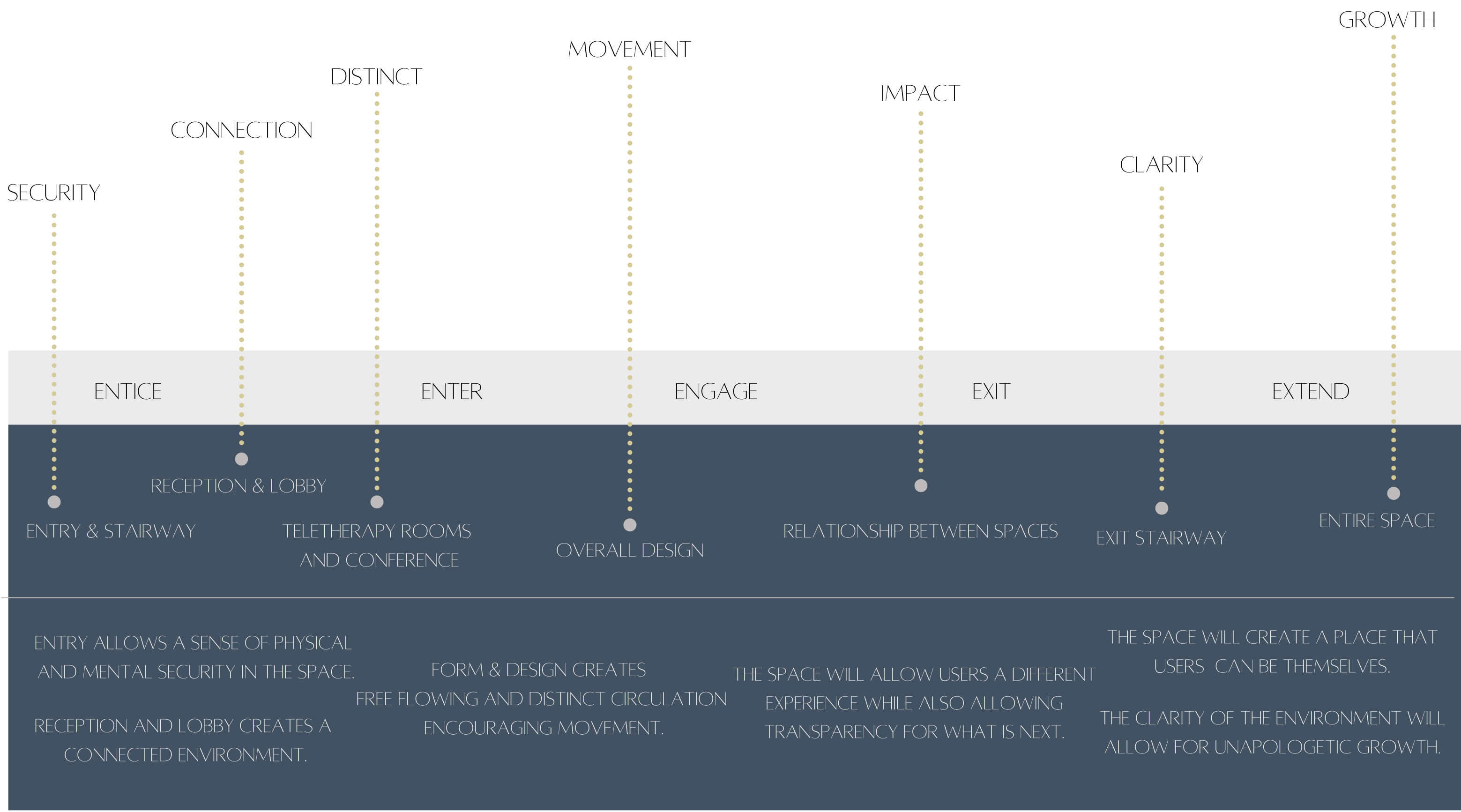
USER EXPERIENCE

TOUCHPOINTS

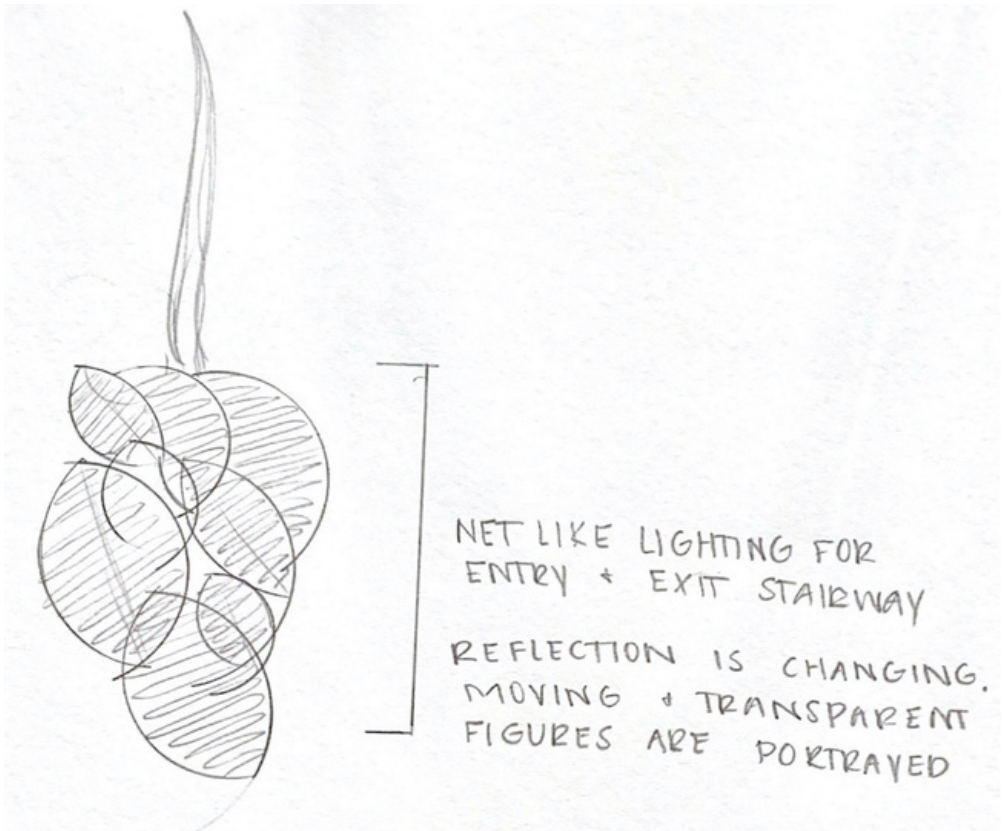
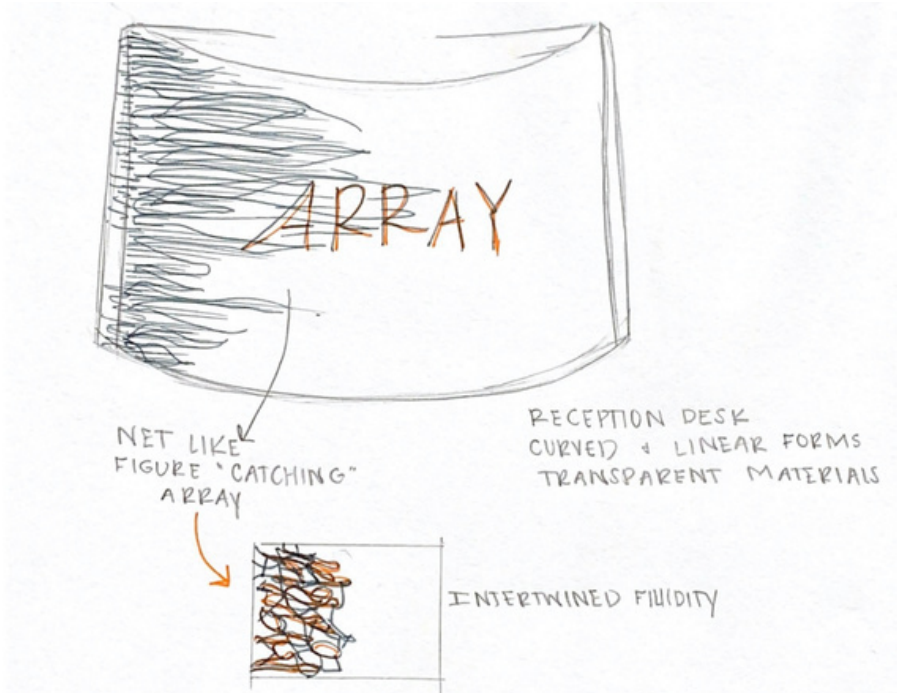
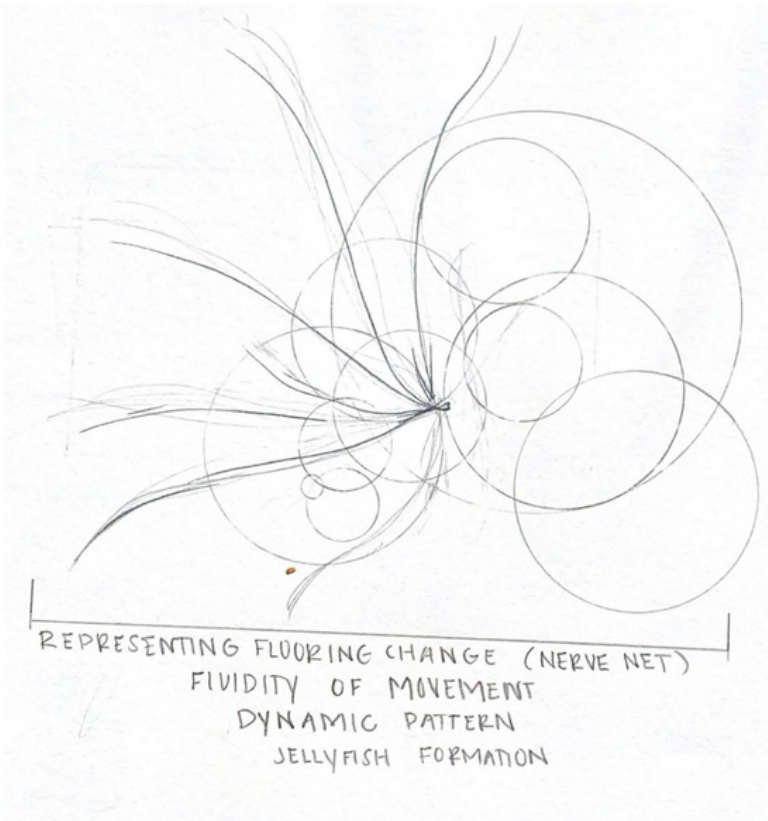
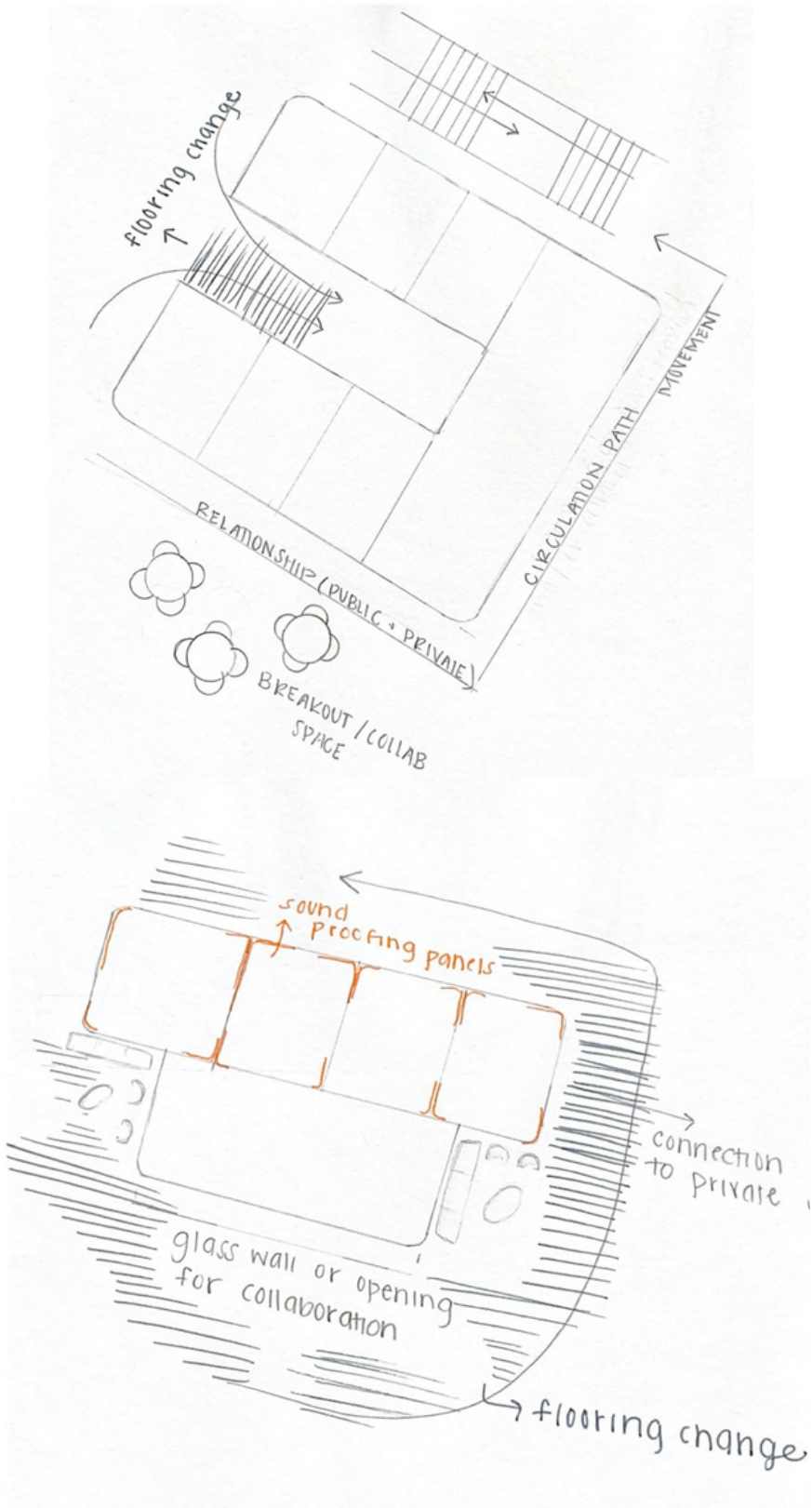
USER EXPERIENCE

USER JOURNEY

ARRAY

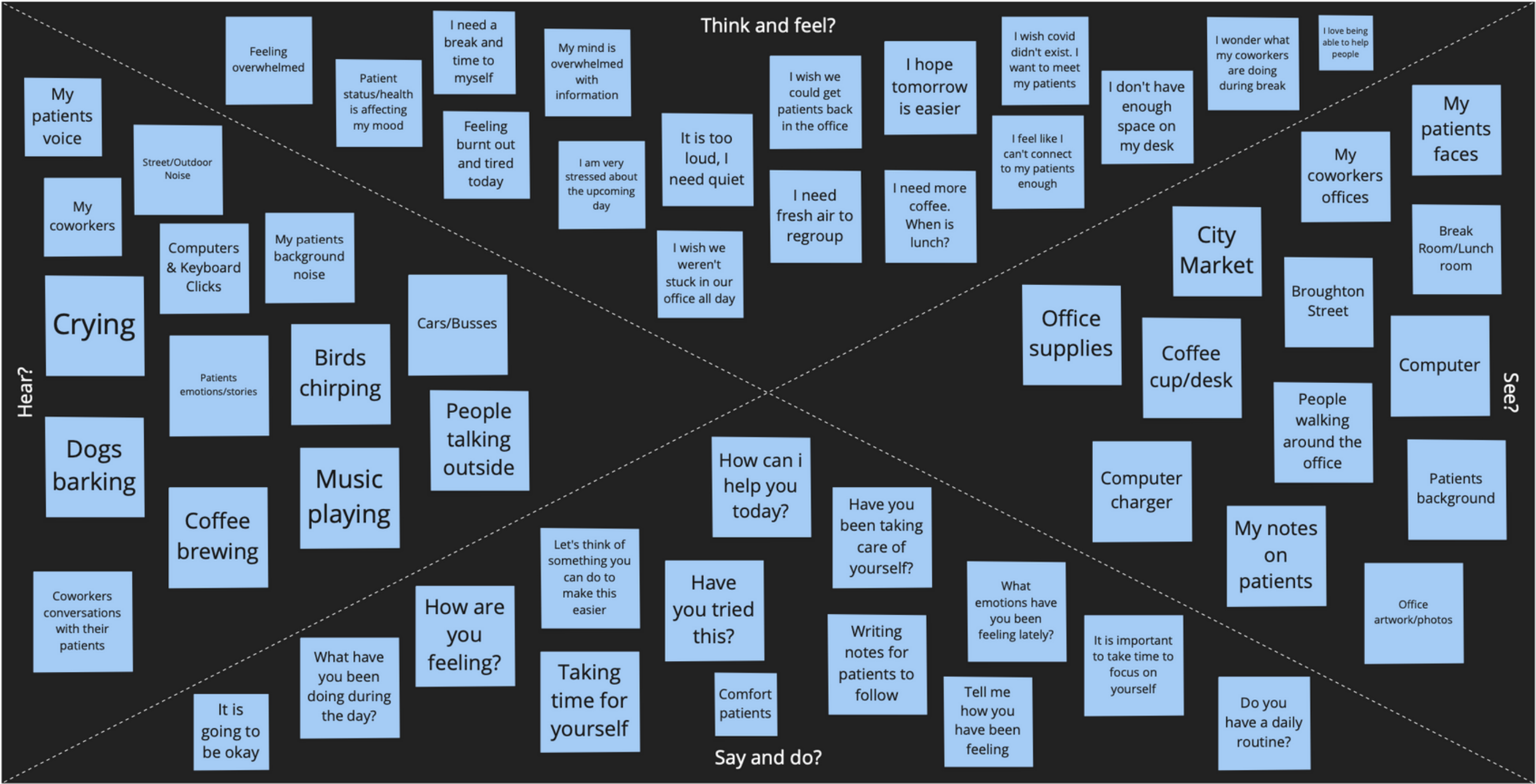


KEY EXPERIENCE SKETCHES



EMPATHY MAP #1

Ashley Pitts (Clinician Recruitment Manager)



Pain

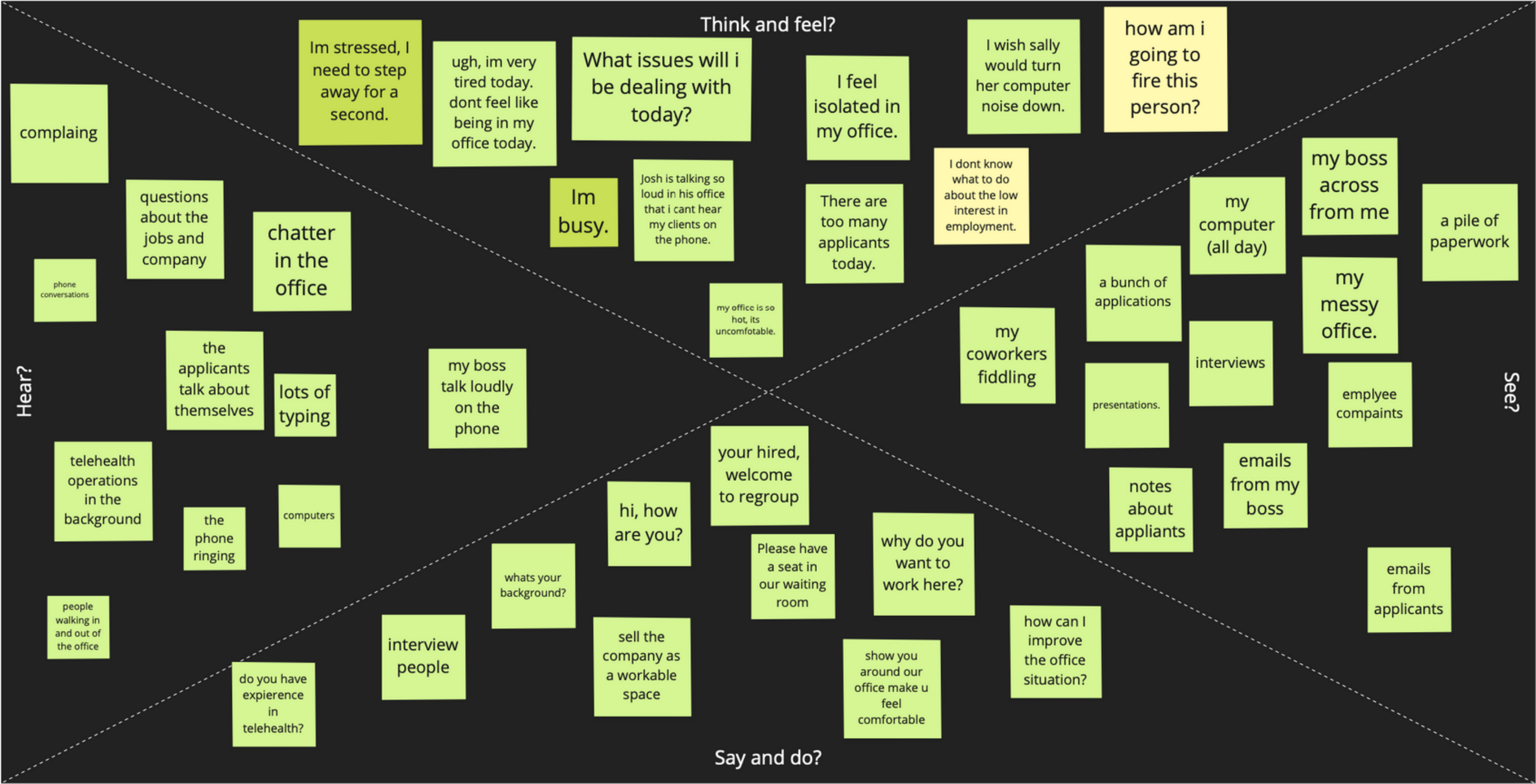
- Direct impact on my own mood and feelings
- Feeling the emotions for them
- Physical pain from sitting in the same position all day
- Headaches and neck pain from stress and tension
- Feeling like you can't do enough

Gain

- Happiness knowing I am helping other people
- Having an impact on someone else's emotional and mental health in a positive way
- Making a difference in their lives
- Experience and knowledge for your own personal problems or issues
- Making personal connections to other people

EMPATHY MAP #2

Pam Sunlitis (VP of Human Resources)



Pain

- A loud office with alot of people
- Not being productive
- feeling stressed.
- bringing my stress home with me

Gain

- Personal Achievement
- having new satisfied employees
- my employees being content with thier job and wanting to stay.
- enjoy coming to work everyday

EMPATHY MAP #3

Nicole C



CONCEPT



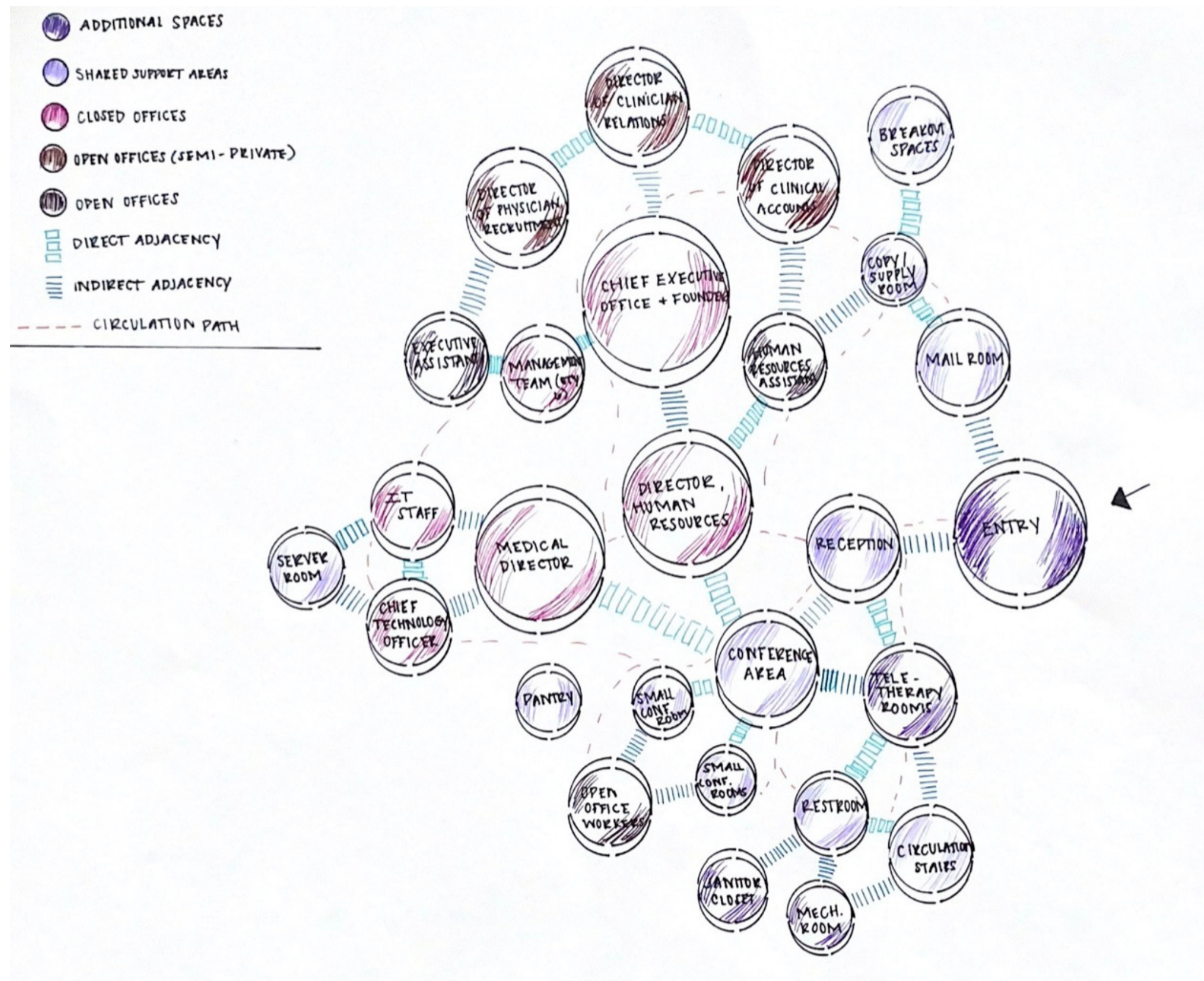
NERVE NET

JELLYFISH COMMUNICATE THROUGH THE UNIQUE AND MYSTERIOUS METHOD OF BIOLUMINESCENCE. THROUGH THE RELEASE OF CHEMICALS AND ILLUMINATION OF FLASHING LIGHTS, THEY INTERACT WITH OTHERS IN THEIR BIOME. THIS SEEMINGLY FLAWLESS WAVE OF MOVEMENT IS A COORDINATED EXPRESSION OF JET PROPULSION AND THE TECHNICAL ALTERNATION OF CONTRACTION AND RELAXATION OF MUSCLES GUIDED BY A NETWORK OF NEURONS. THEIR CENTRAL AXIS WITH PERIPHERAL FLUIDITY OF MOVEMENT SUGGESTS A DYNAMIC ENERGY THAT IS THE DRIVING FORCE OF MY DESIGN.



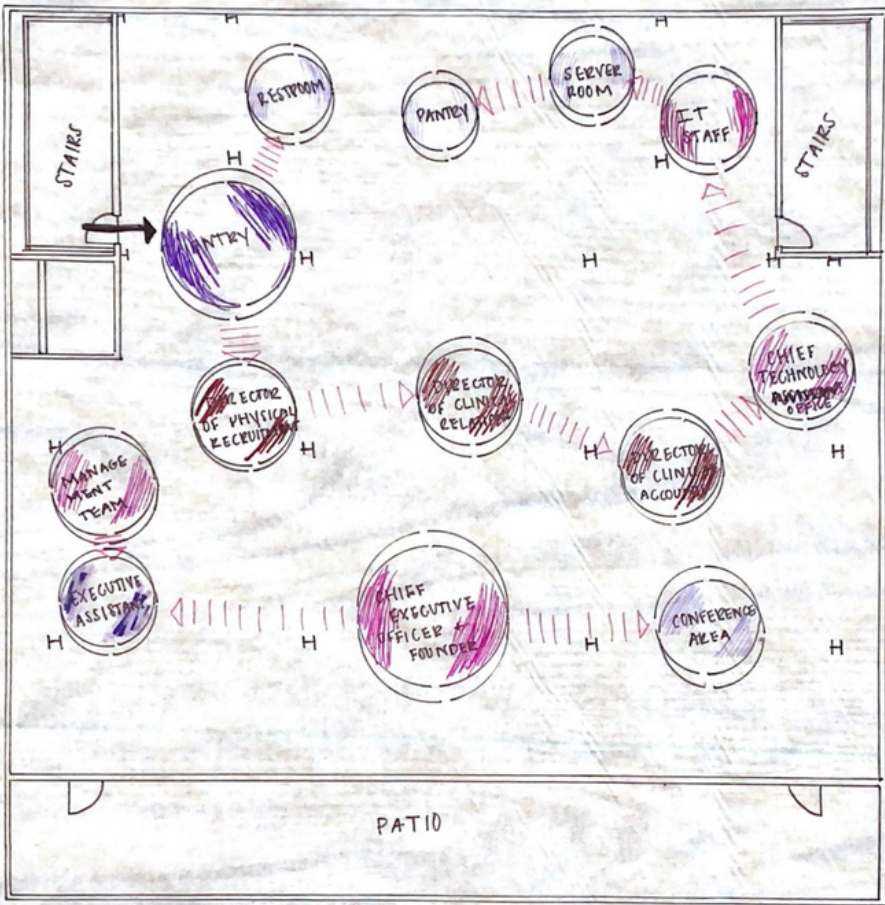
SCHEMATIC DESIGN

ADJACENCY DIAGRAM

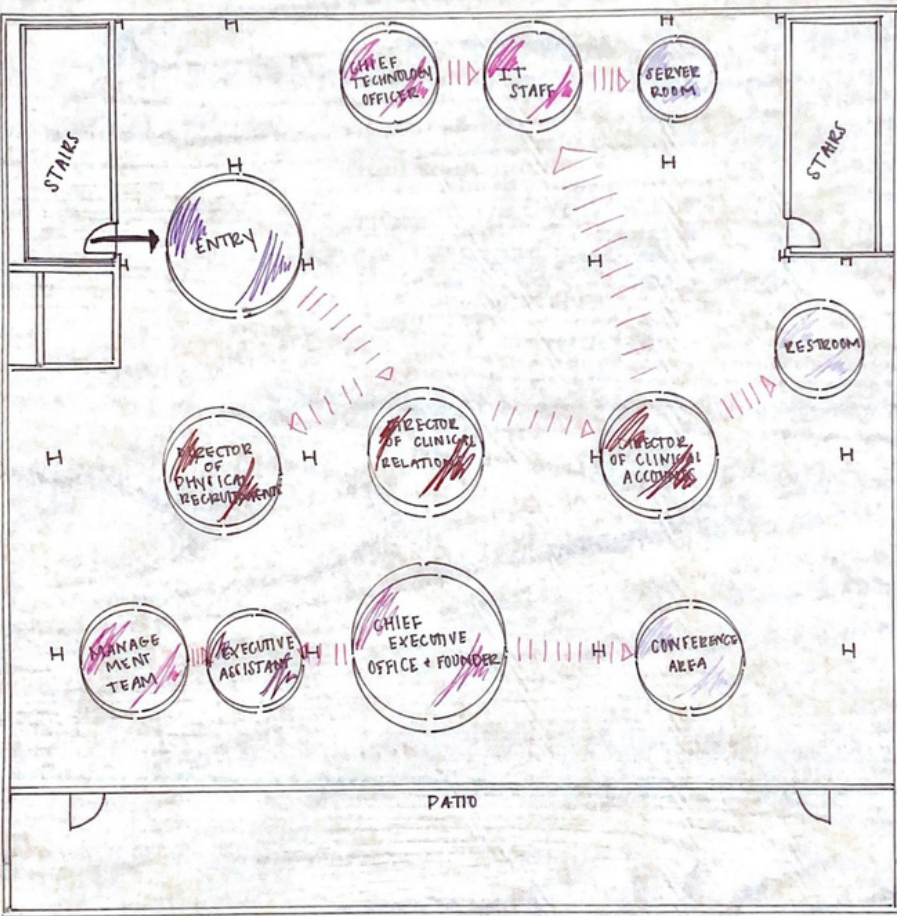
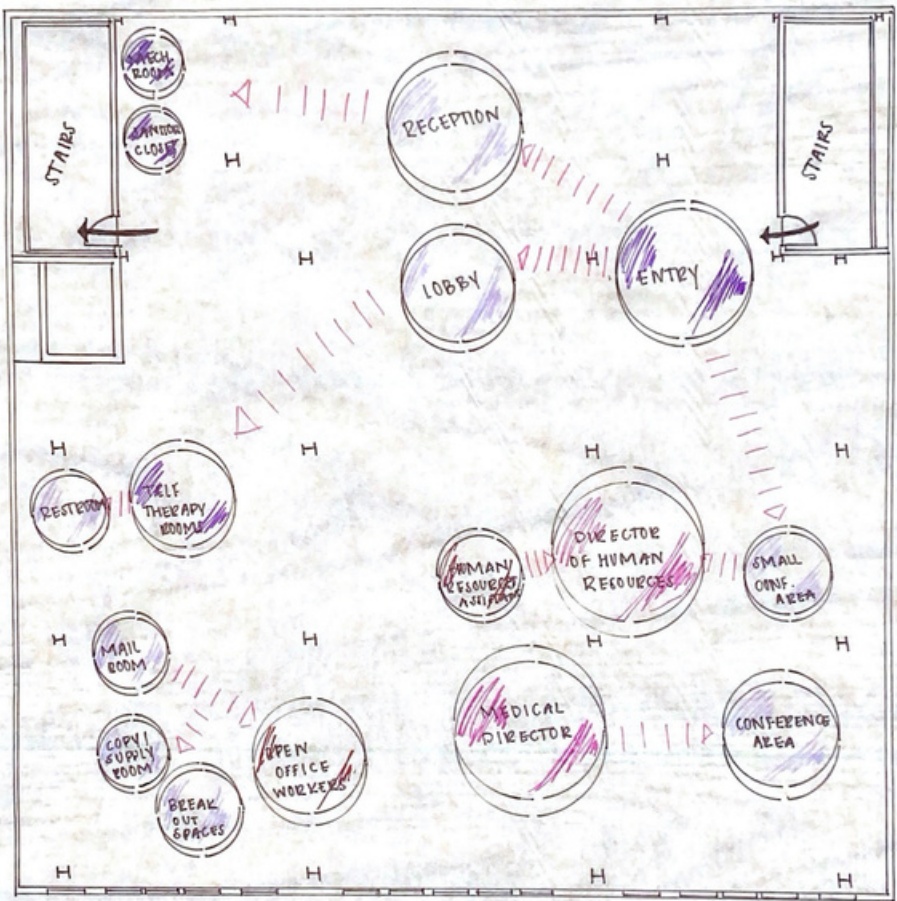


BUBBLE DIAGRAMS

ATTEMPT #1

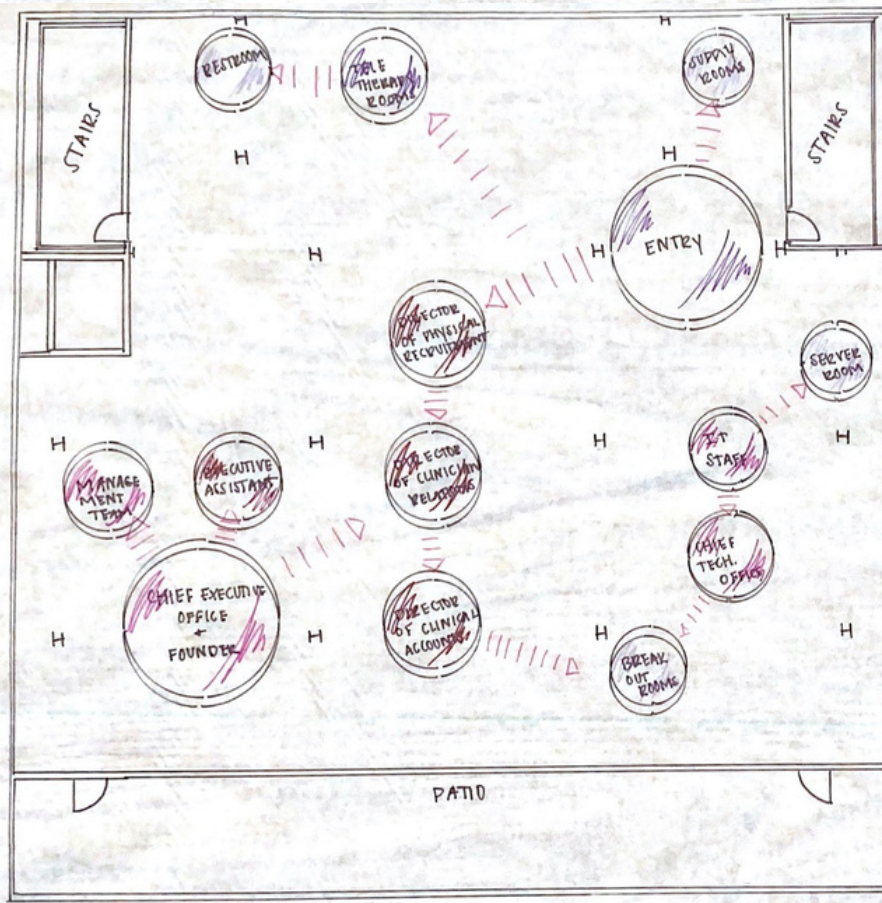
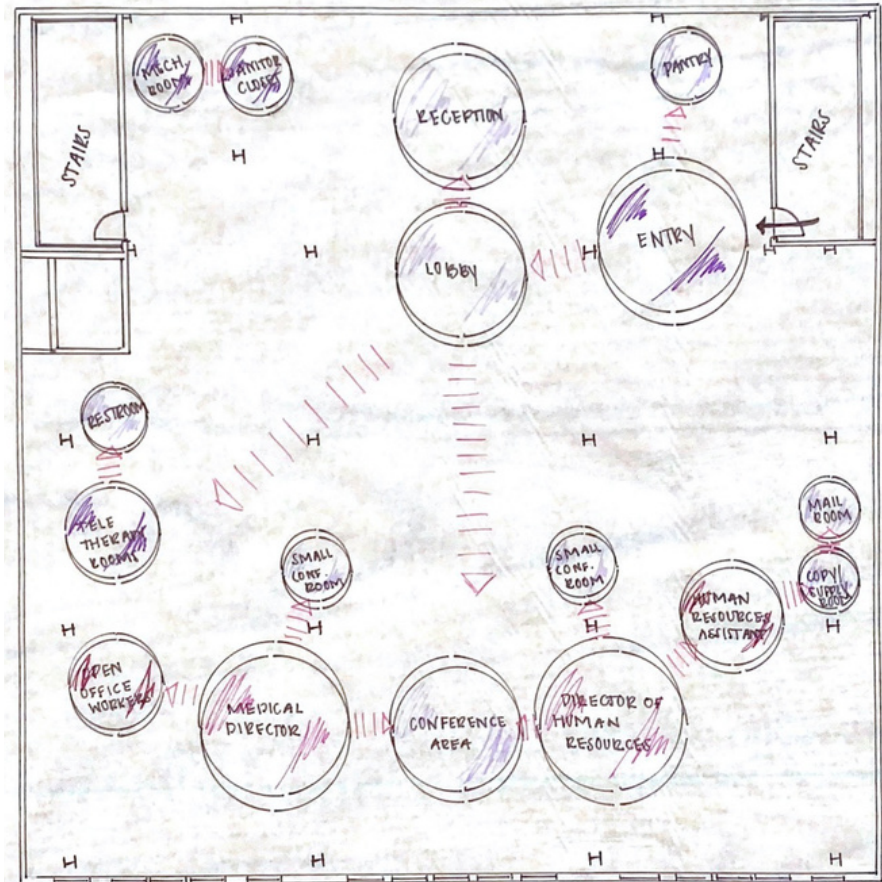


ATTEMPT #2

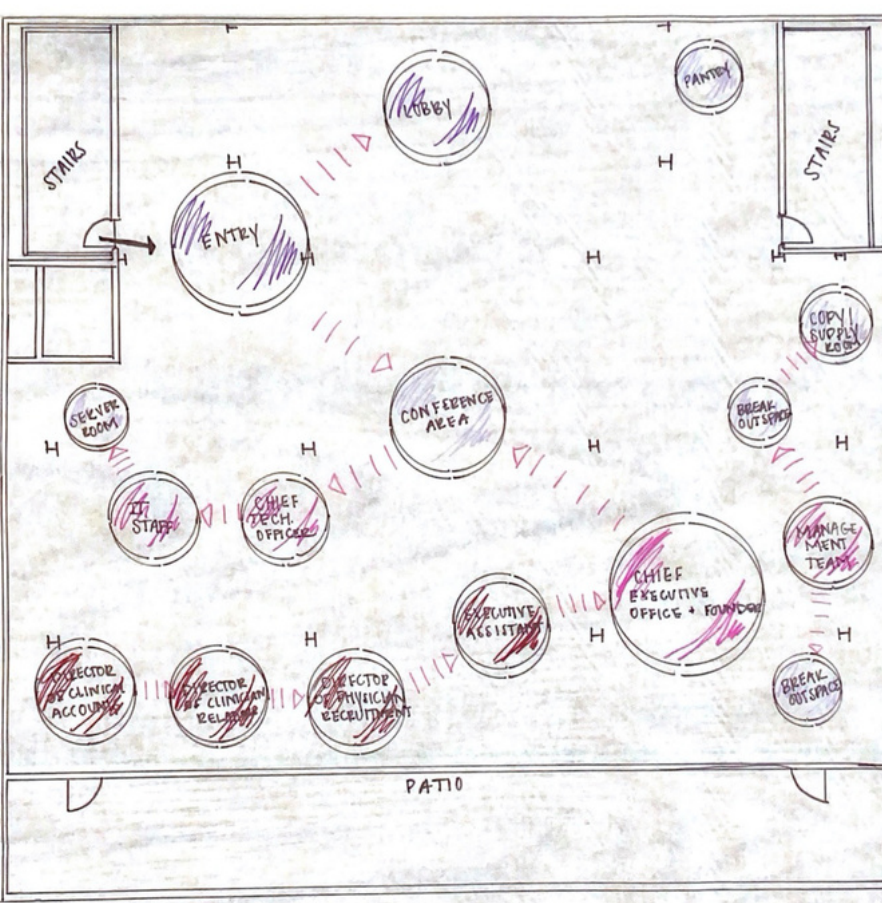
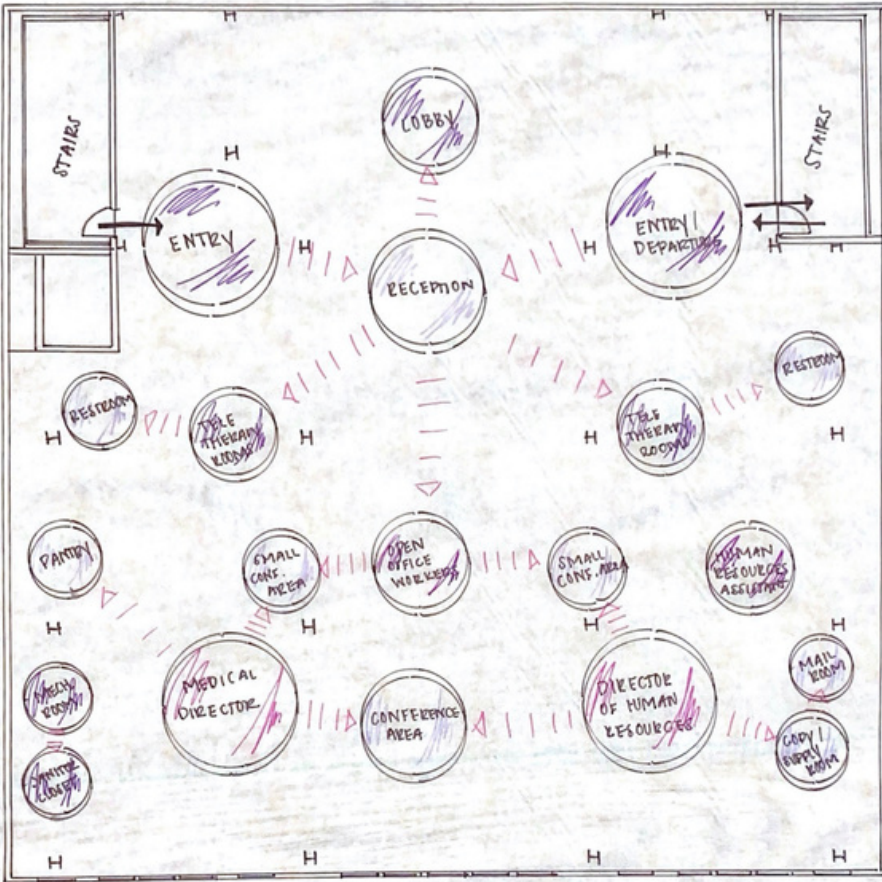


BUBBLE DIAGRAMS

ATTEMPT #3

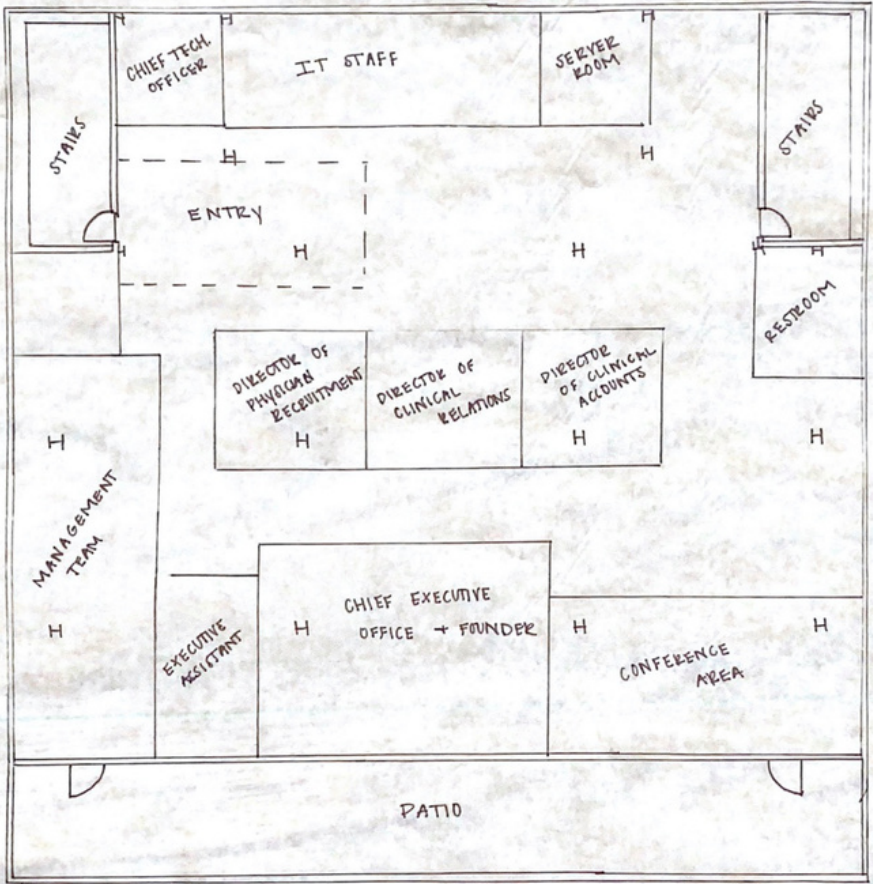
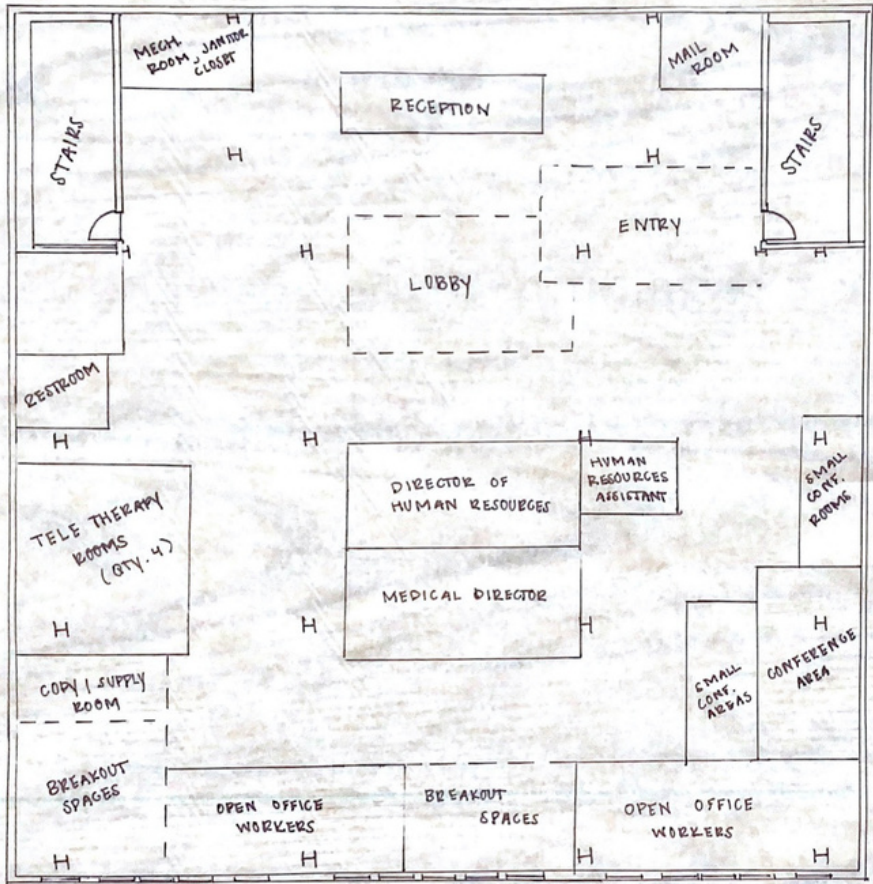


ATTEMPT #4

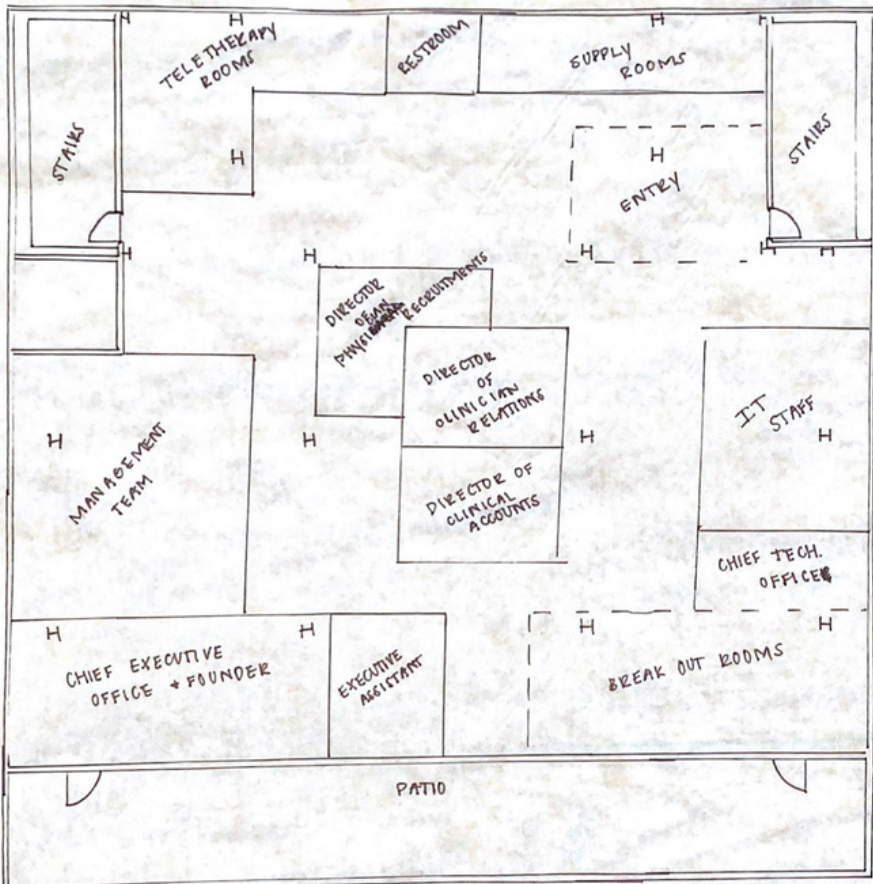
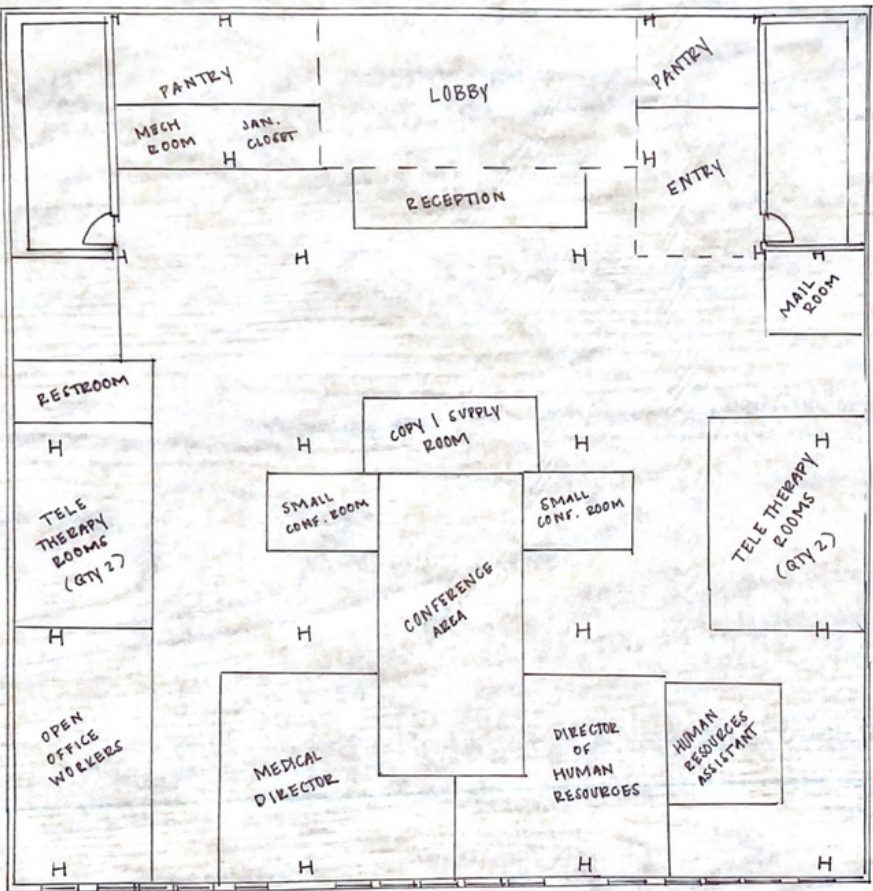


BLOCK DIAGRAMS

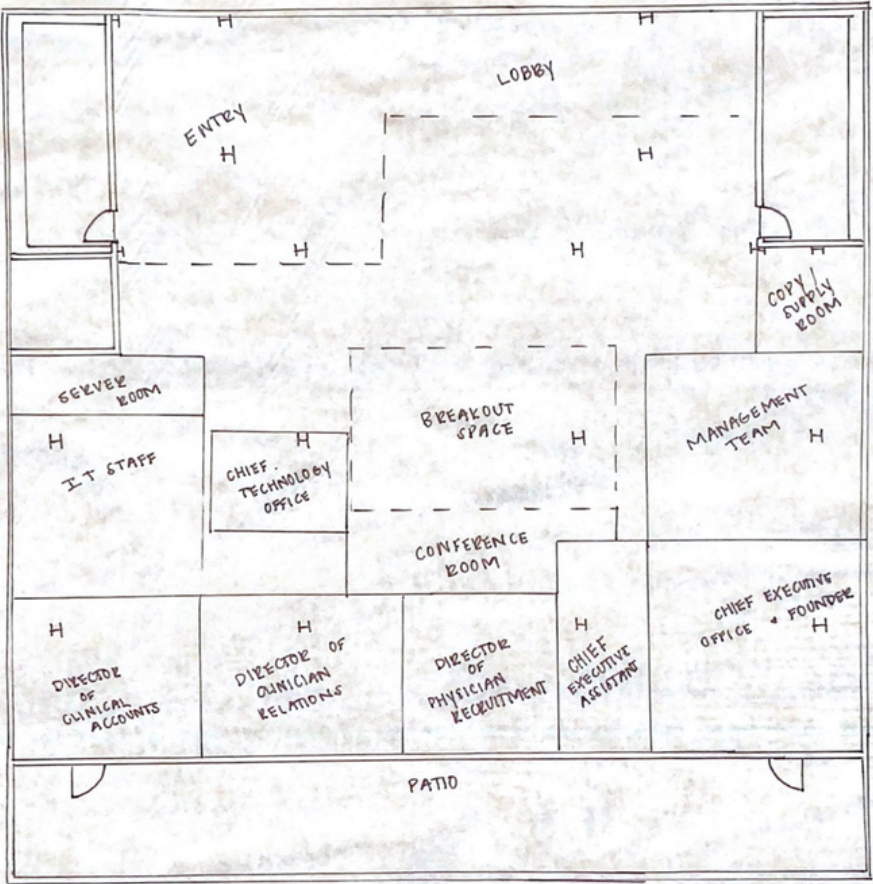
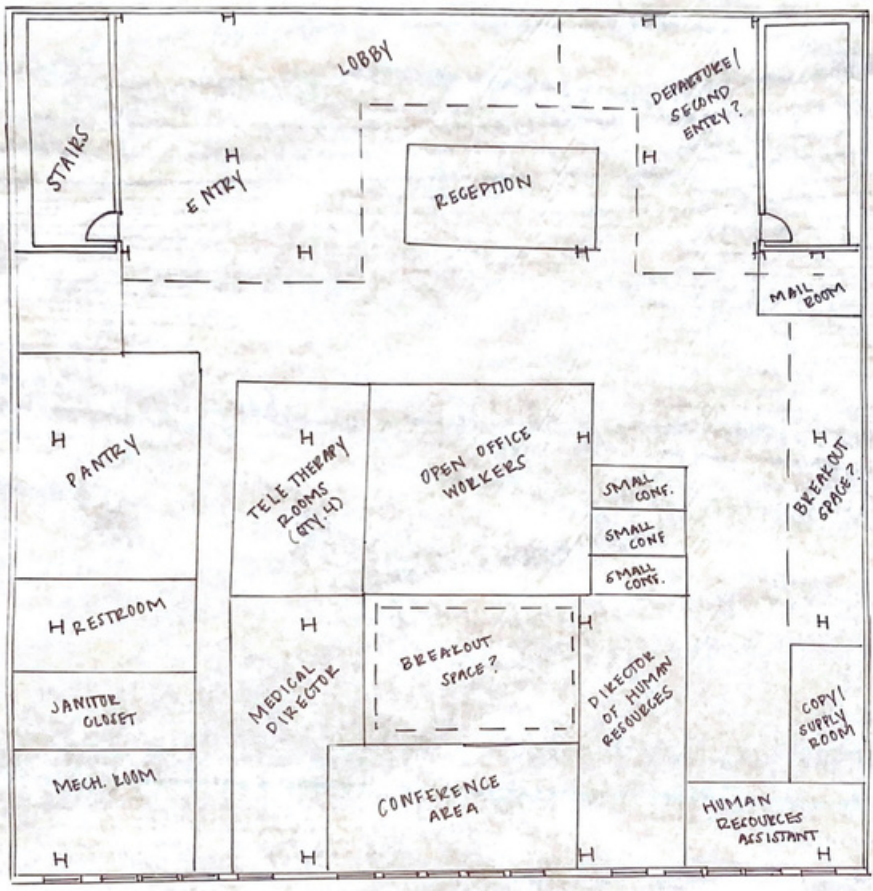
ATTEMPT #1



ATTEMPT #2

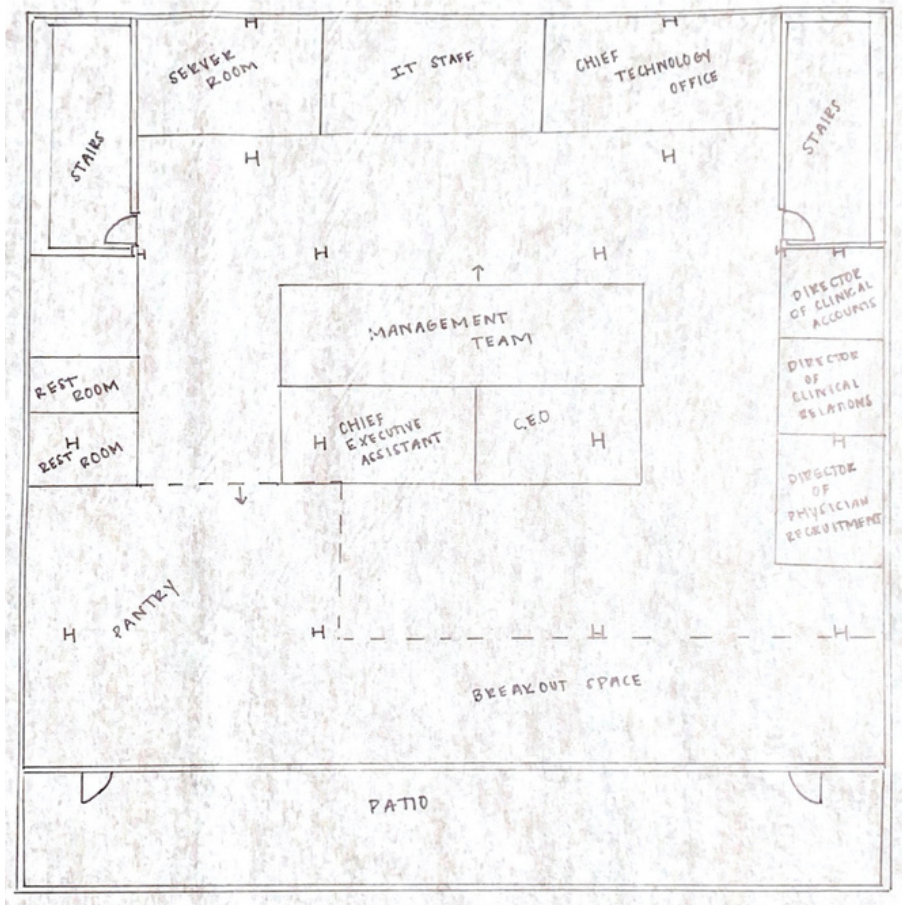
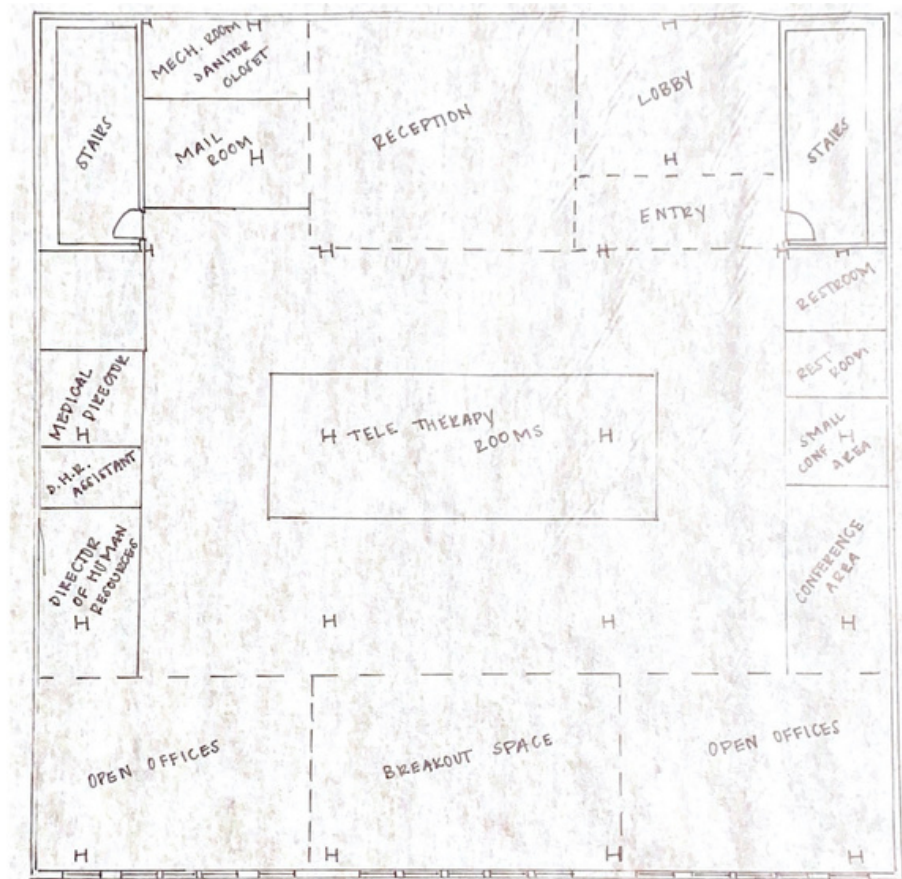


ATTEMPT #3

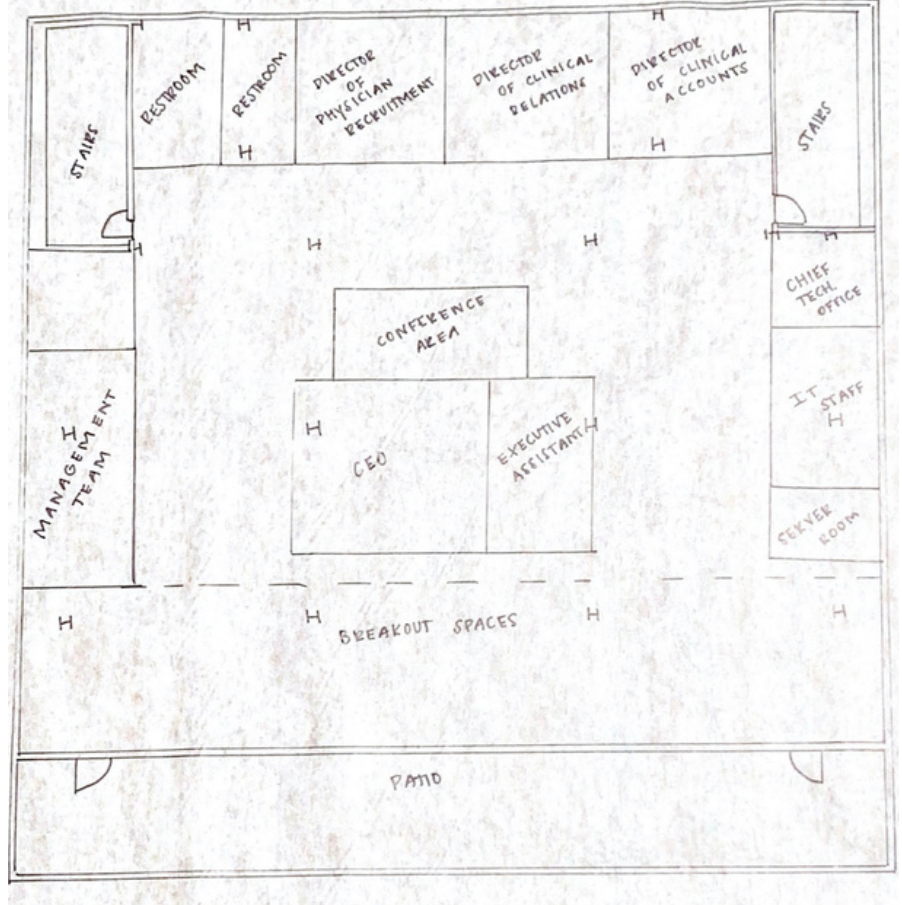
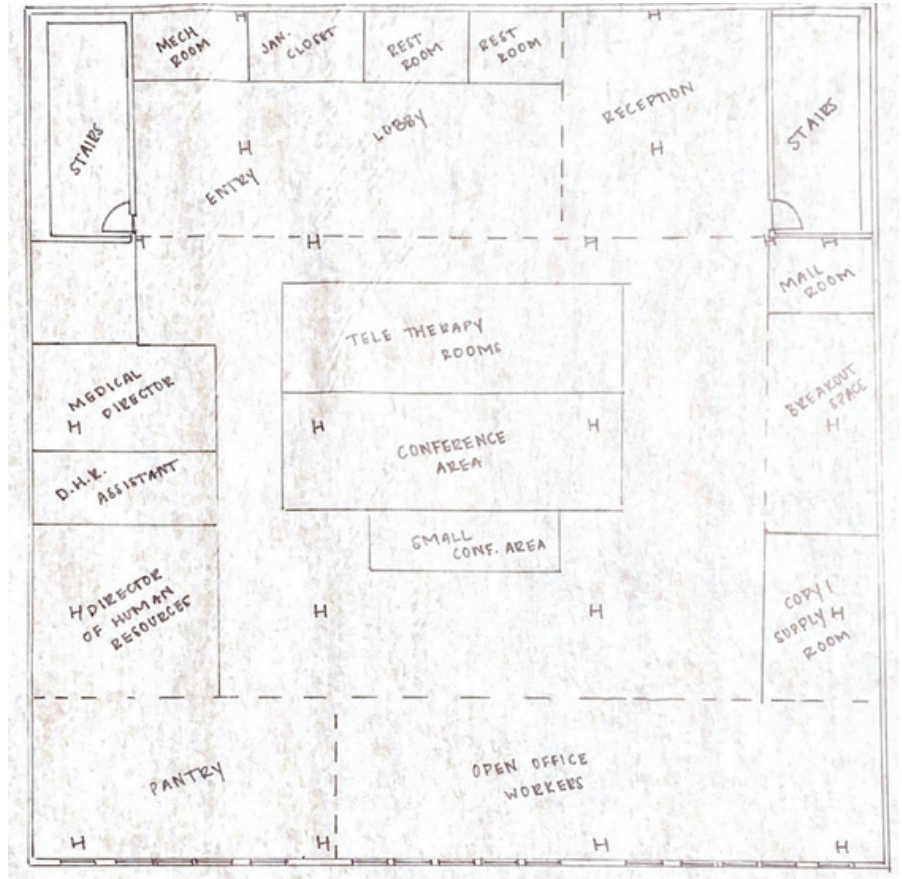


BLOCK DIAGRAMS

FINAL ATTEMPT #1

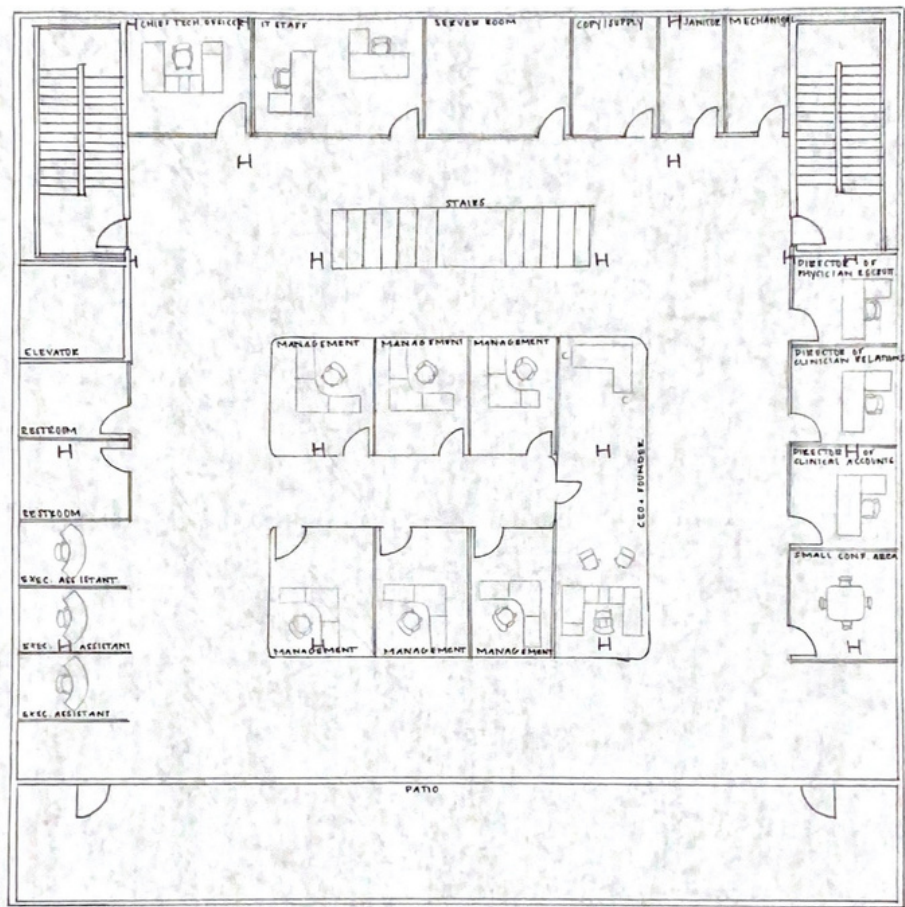
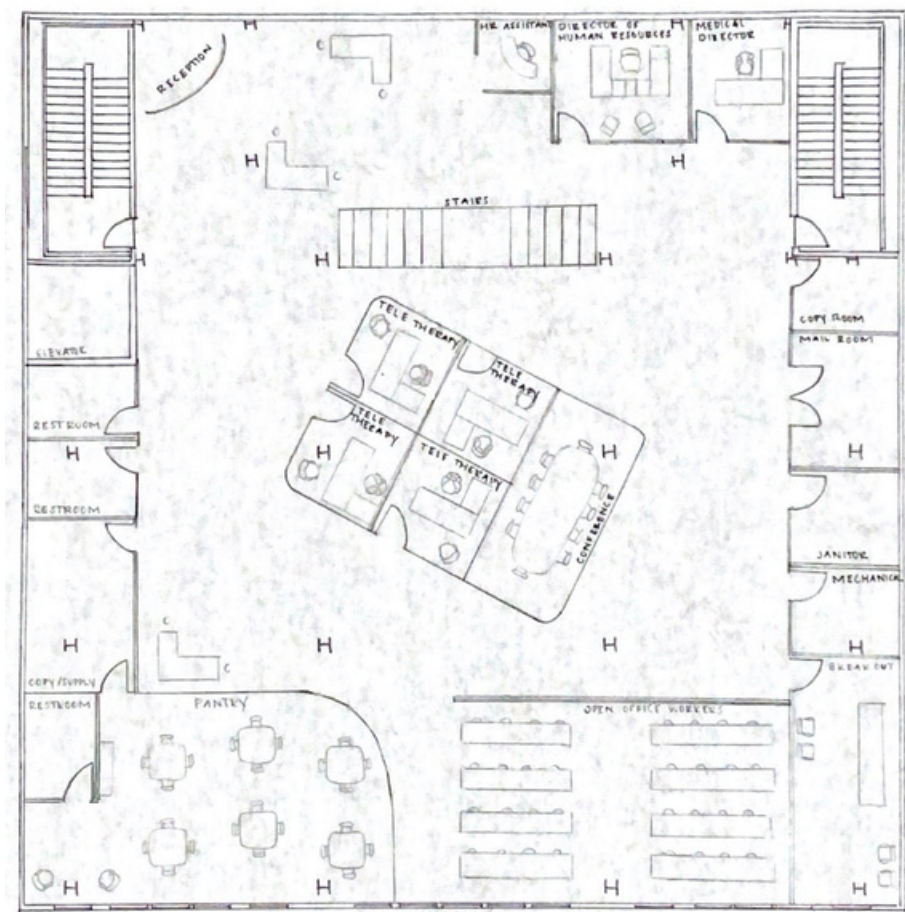


FINAL ATTEMPT #2

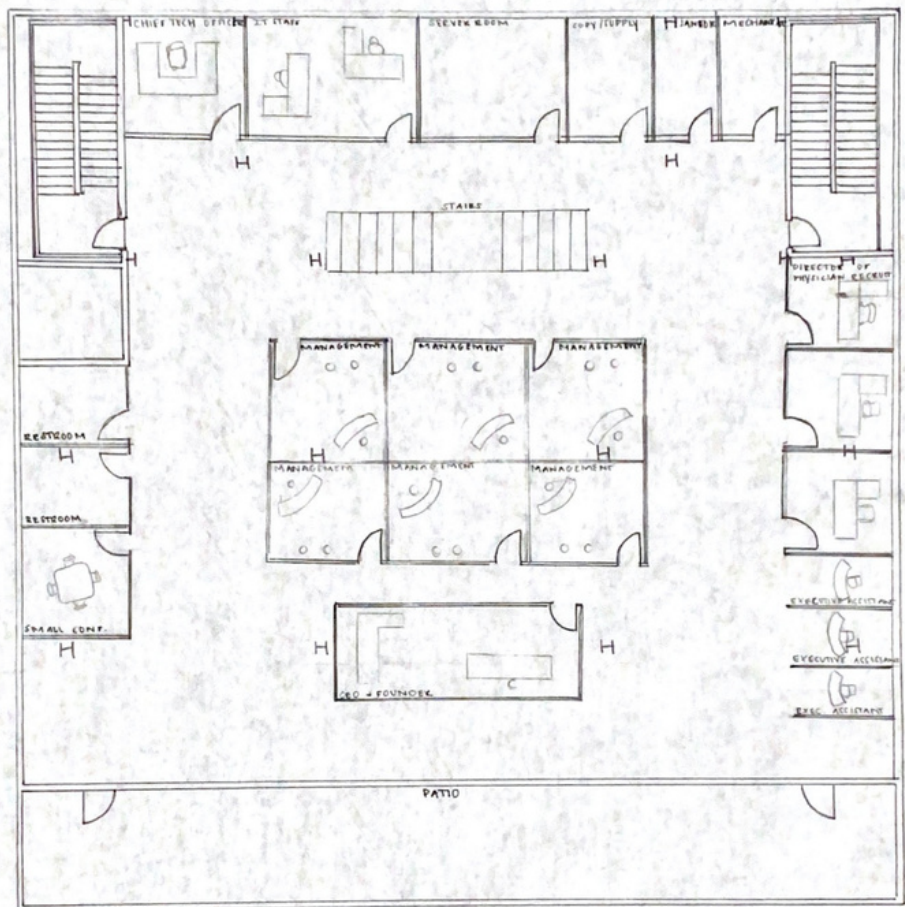
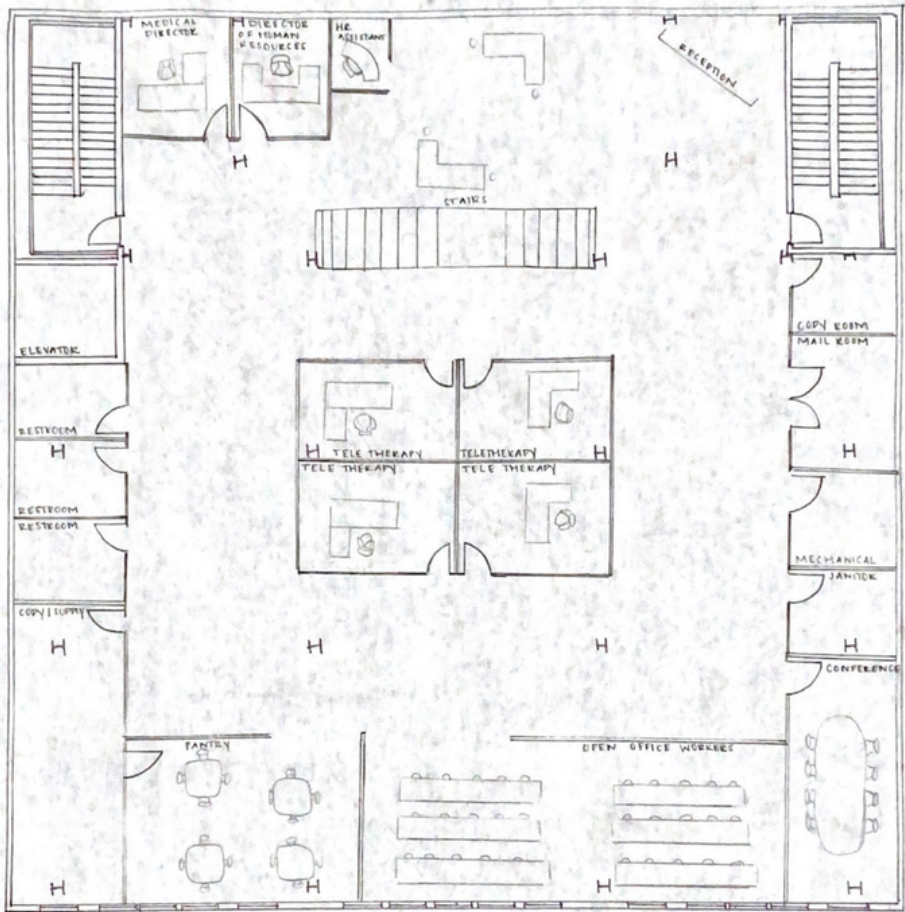


LOOSE PLANS

ATTEMPT #1

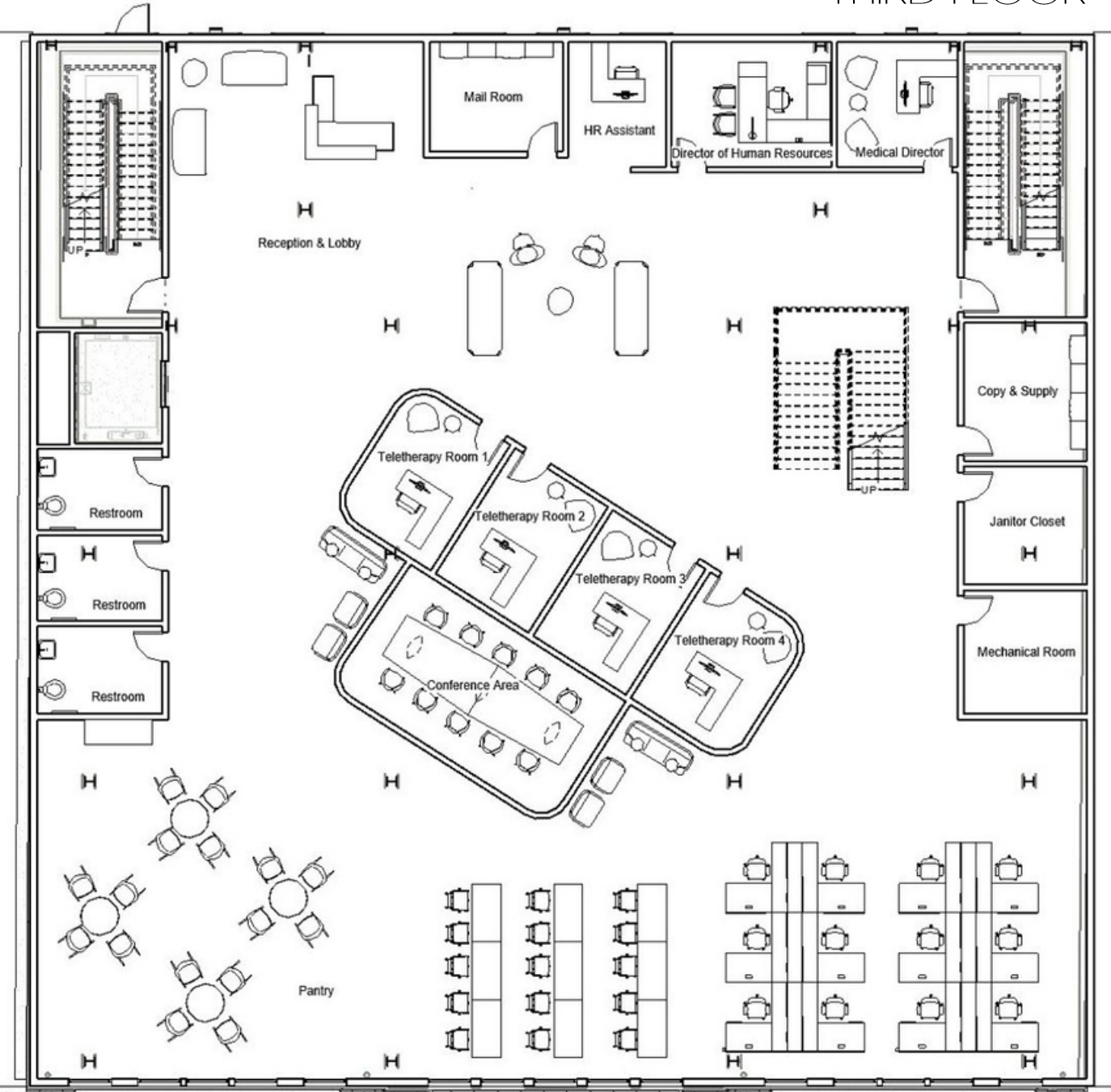


ATTEMPT #2



SCHEMATIC PROCESS

THIRD FLOOR



NOT TO SCALE ⊕

FOURTH FLOOR



NOT TO SCALE ⊕

DESIGN DEVELOPMENT

FINAL FURNITURE PLANS

THIRD FLOOR



NOT TO SCALE ⊕

- A: RECEPTION
- B: MAIL ROOM
- C: HR ASSISTANT
- D: DIRECTOR OF HUMAN RESOURCES
- E: MEDICAL DIRECTOR
- F: COPY & SUPPLY
- G: JANITOR CLOSET
- H: MECHANICAL ROOM
- I: OPEN OFFICES
- J: BREAKOUT
- K: LOUNGE
- L: PANTRY
- M: CONFERENCE ROOM
- N: BREAKOUT
- O-Q: BATHROOM
- R-U: TELETHERAPY

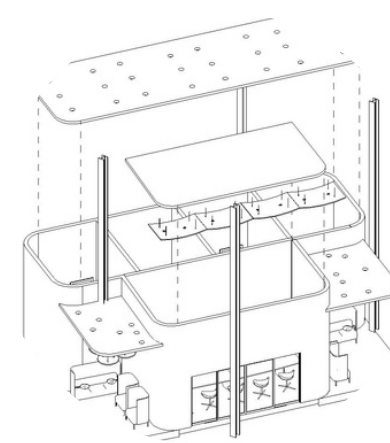
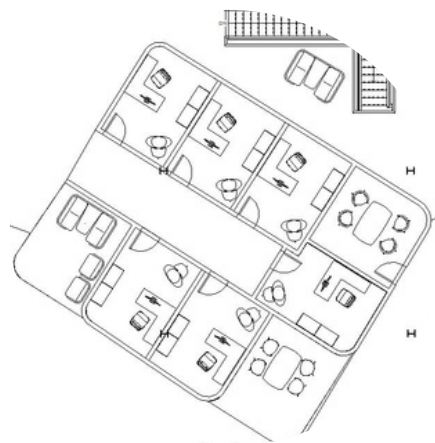
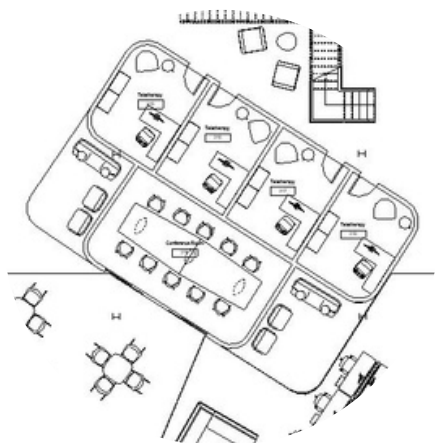
FOURTH FLOOR



NOT TO SCALE ⊕

- A: CHIEF TECH. OFFICER
- B: IT STAFF
- C: SERVER ROOM
- D: COPY & SUPPLY
- E: JANITOR CLOSET
- F: MECHANICAL ROOM
- G: CEO
- H: OPEN OFFICE/ASSISTANT
- I: BREAKOUT
- J: MANAGEMENT
- K: MANAGEMENT
- L: BREAKOUT
- M: DIRECTORS
- N-O: BATHROOM
- P: MANAGEMENT
- Q: MANAGEMENT
- R: MANAGEMENT
- S: SMALL CONFERENCE
- T: MANAGEMENT

CONCEPT APPLICATION



This center element of design is located on the third floor. The "spinning" orientation with elements coming off of it is meant to reflect the **movement** & **communication** of a jellyfish.

This breakout space includes circle **ceiling tiles** covered in different shades of blue. This idea is meant to demonstrate the **form** of a jellyfish and the **color** of water.

This center element of design is located on the fourth floor. The "spinning" orientation with elements coming off of it is meant to reflect the **movement** & **communication** of a jellyfish.

This breakout space on the fourth floor includes several pieces that are highlighted by their **center element** like a jellyfish. This includes the chairs, table and ceiling tiles.

This axon shows the third floor element at a bigger scale. Shown in the conference room is serpentina **wave ceiling tiles** reflecting the idea of **water** and **movement** of a jellyfish.

CONCEPT APPLICATION



This upholstery pattern is used on the chairs in the breakout space. the **connection** of several different lines in the pattern was used to reflect communication between jellyfish, or "nerve net", with a pop of color.



This textured wallcovering is used throughout the space highlighting **movement** and connecting to the way a jellyfish moves through water.



This textured wallcovering is used in the reception. It is placed behind the array logo and resembles **pebbles** as if you were closer to water. The idea of **connection** between all of these pieces is evident as well.



This carpet is **connected** by hundreds of **different lines and "waves"**. This both represents water through the colors and the flawless movement of jellyfish.



Similarly, this marble finish at the reception desk allows for understanding of **connection** between **several elements** through the use of line like a jellyfish's tentacles.

PLAN ANALYSIS



SUSTAINABILITY

USE OF GREENERY
THROUGHOUT THE SPACE
CREATES HEALTHY WORK
ENVIRONMENT.



WAYFINDING

FLOORING CHANGES
AMONG SPACES USED AS
WAYFINDING TECHNIQUE.



HUMAN FACTORS

DESK CHAIR IN ALL OFFICES
MEET ERGONOMIC
STANDARDS FOR A
HEALTHY WORK SPACE.



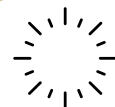
NOISE

OFFICES AND CONFERENCE
ROOM INCLUDE ACOUSTIC
CEILING TILES.



TECH CONSIDERATION

SMART TVS HAVE BEEN
PLACED IN BREAKOUT &
CONFERENCE ROOMS FOR
COLLABORATION.



NATURAL LIGHT

ACCESS TO WINDOWS
PROMOTES A HEALTHY
WORK ENVIRONMENT



SENSORY CHANGE

FLOORING CHANGE
ALLOWS FOR USERS TO
EXPERIENCE DIFFERENT
ENVIRONMENTS.



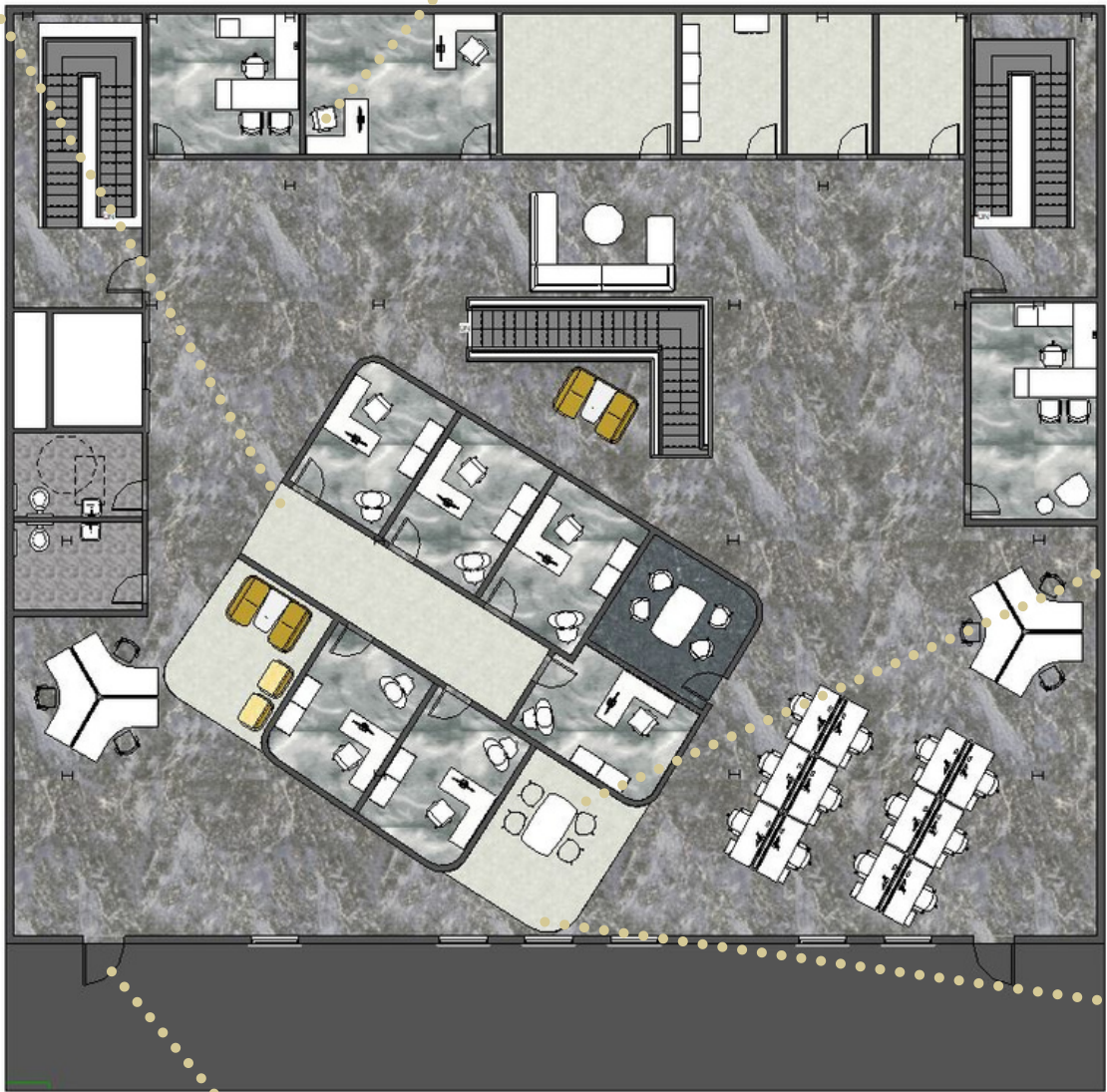
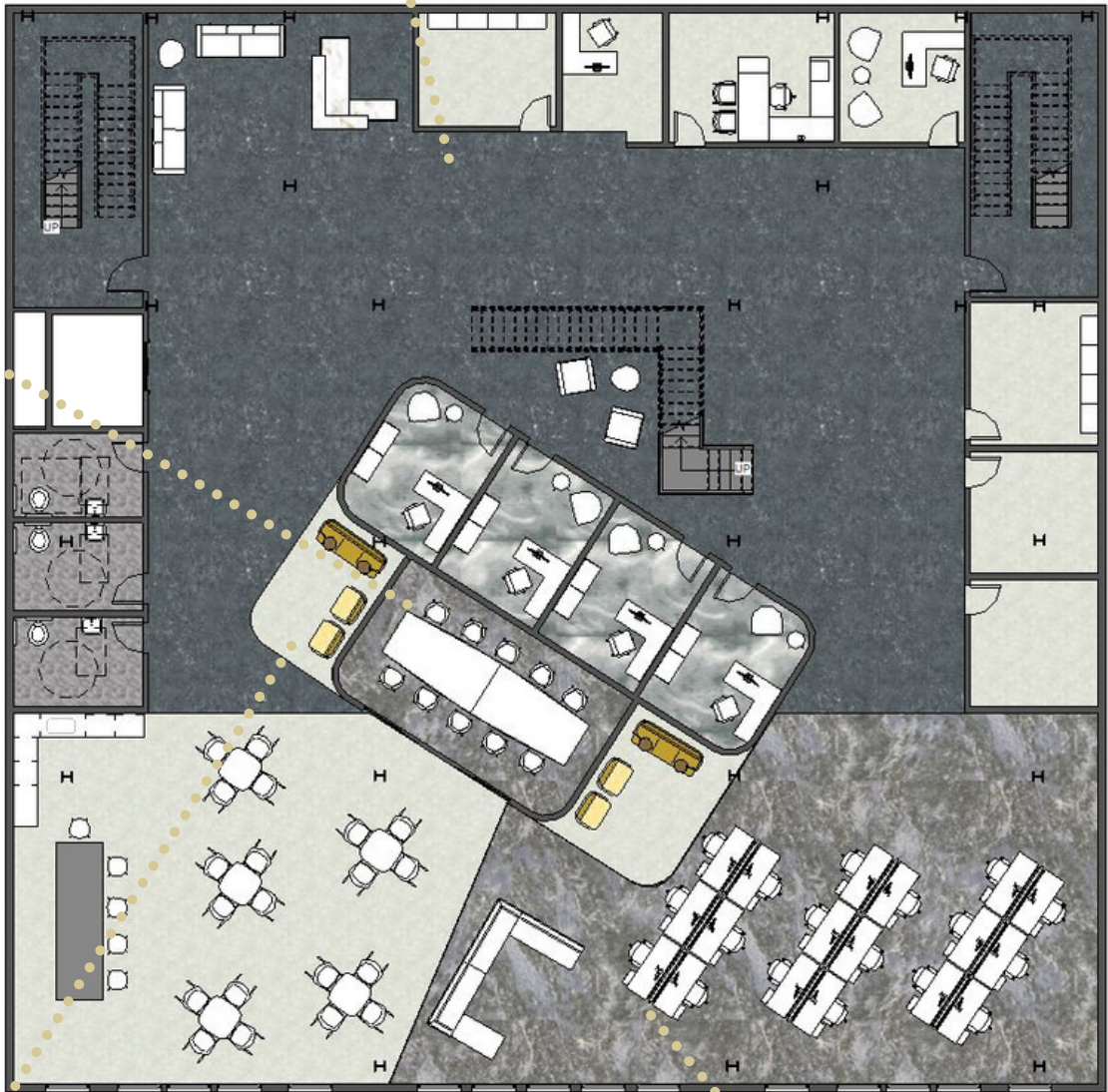
CHOICE

TEKNION ADJUSTABLE DESKS
ALLOW FOR THE CHOICE OF
A SIT OR STAND WORK
ENVIRONMENT.

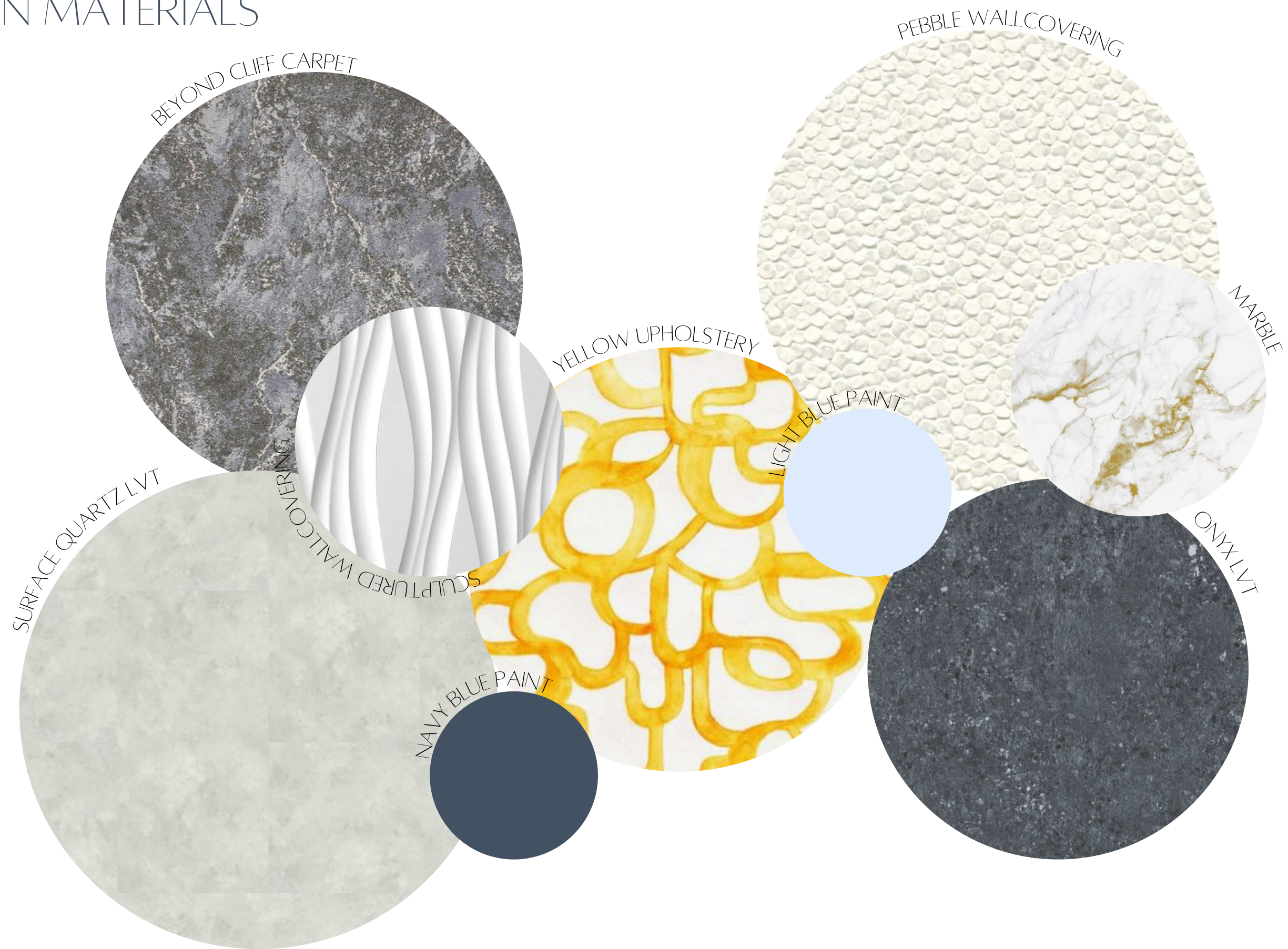


ACCESS TO NATURE

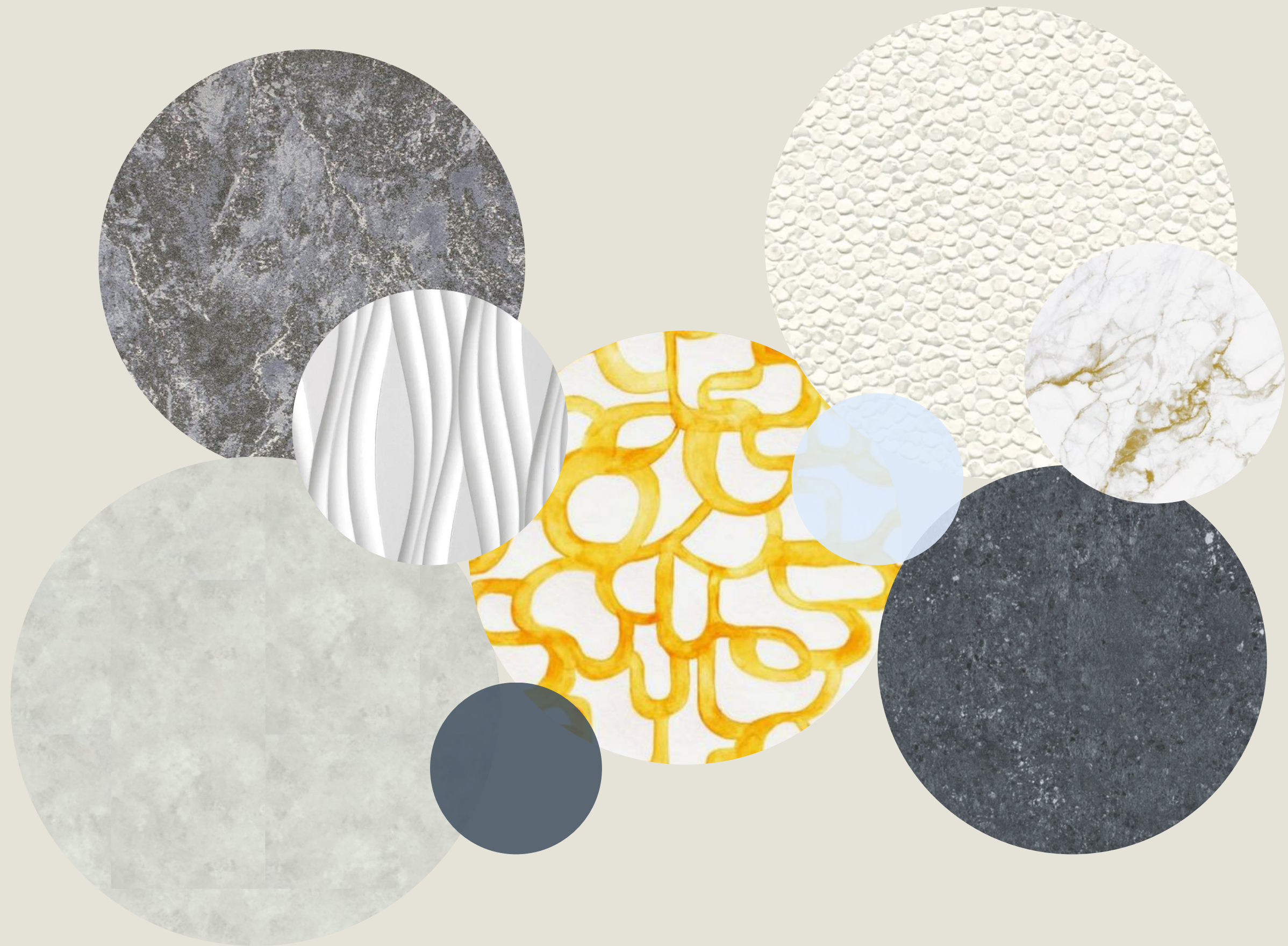
PATIO ATTOWS USERS TO
TAKE A BREAK FROM
WORKING AND ENJOY FRESH
AIR.



COMMON MATERIALS



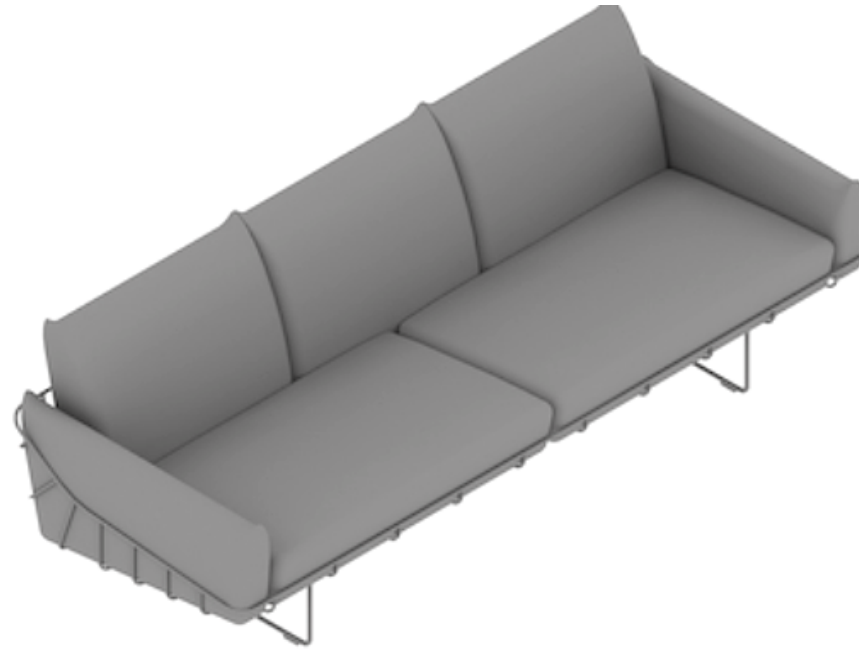
MATERIAL SELECTION WAS INSPIRED BY NATURALISTIC COLORS AND FORMS
LINKED TOGETHER THROUGH A WAVE OF FLAWLESS MOVEMENT.
THIS COMMUNICATION METHOD IS CONNECTED TO A JELLYFISH'S "NERVE NET".



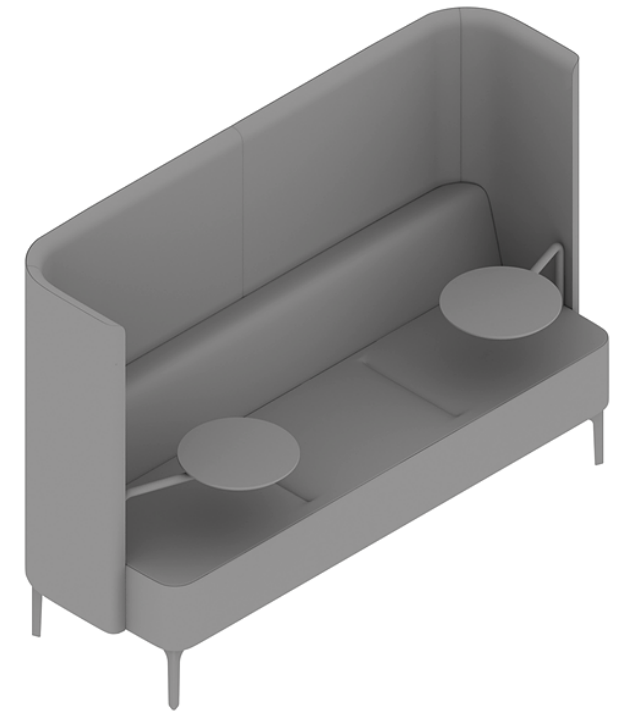
COMMON FURNITURE



HERMAN MILLER Y BASE TABLE



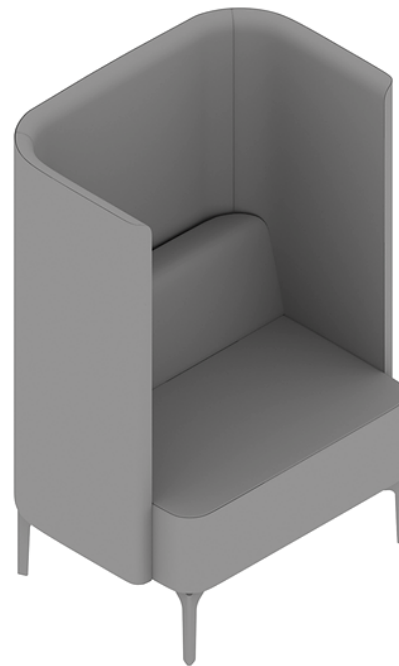
HERMAN MILLER WIREFRAME SOFA 3 SEAT



HERMAN MILLER PULLMAN SOFA 3 SEAT



HERMAN MILLER 4 STAR CHAIR



HERMAN MILLER PULLMAN CHAIR



TEKNION HEIGHT ADJUSTABLE DESK

FURNITURE SELECTION WAS INSPIRED BY THE FORM OF A JELLYFISH, A CENTER ELEMENT AS THE SUPPORT/FOUNDATION.
FURTHERMORE, FURNITURE WAS CHOSEN TO MAKE USERS FEEL COMFORTABLE WHILE PROVIDING FOR SEVERAL TYPES OF WORK ENVIRONMENTS.

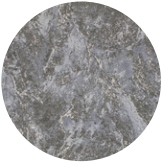
BREAKOUT



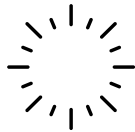
SCULPTURE COLLECTION
WALLCOVERING



SENSORY CHANGE



BEYOND CLIFF
CARPET



NATURAL LIGHT



SURFACE QUARTZ
LVT



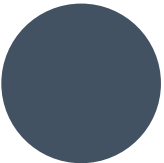
TECH CONSIDERATION



LIGHT BLUE PAINT



ACCESS TO NATURE



NAVY BLUE PAINT



WAYFINDING



RECEPTION



PEBBLE WALLCOVERING



AMALGAM ONYX
LVT



ORANGE ACCENT
MARBLE



TAN UPHOLSTERY



HUMAN FACTORS



CHOICE



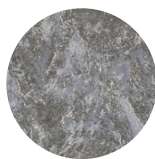
OPEN OFFICE



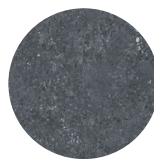
YELLOW UPHOLSTERY



WALLCOVERING



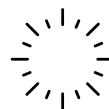
BEYOND CLIFF CARPET



AMALGAM ONYX LVT



SENSORY CHANGE



NATURAL LIGHT



HUMAN FACTORS



TECH CONSIDERATION



CHOICE



WAYFINDING



CONFERENCE & PANTRY

NAVY BLUE PAINTYELLOW UPHOLSTERYWALLCOVERINGSURFACE QUARTZ LVTSENSORY CHANGENATURAL LIGHTHUMAN FACTORSTECH CONSIDERATIONCHOICEWAYFINDING



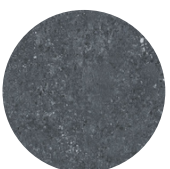
STAIRCASE



LIGHT GREY PAINT



LIGHT BLUE PAINT



AMALGAM ONYX LVT



SENSORY CHANGE



WAYFINDING



ACCESS TO NATURE





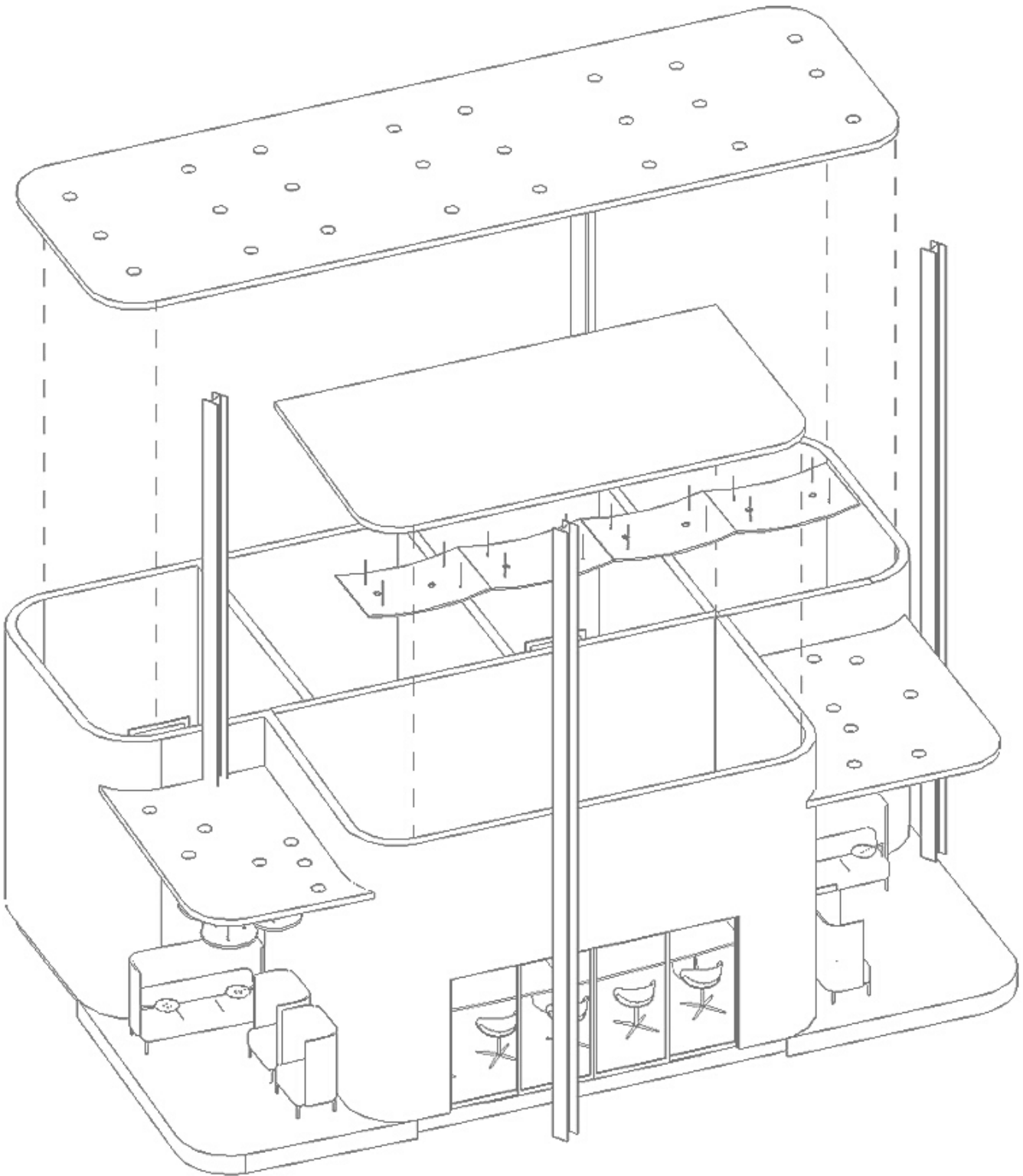
YELLOW PATTERN
UPHOLSTERY



SCULPTURE COLLECTION
WALLCOVERING



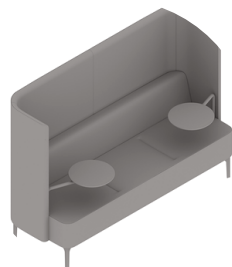
SURFACE QUARTZ
LVT



OPTIMA CIRCLE
CEILING TILES



SERPENTINA WAVES
CEILING TILE



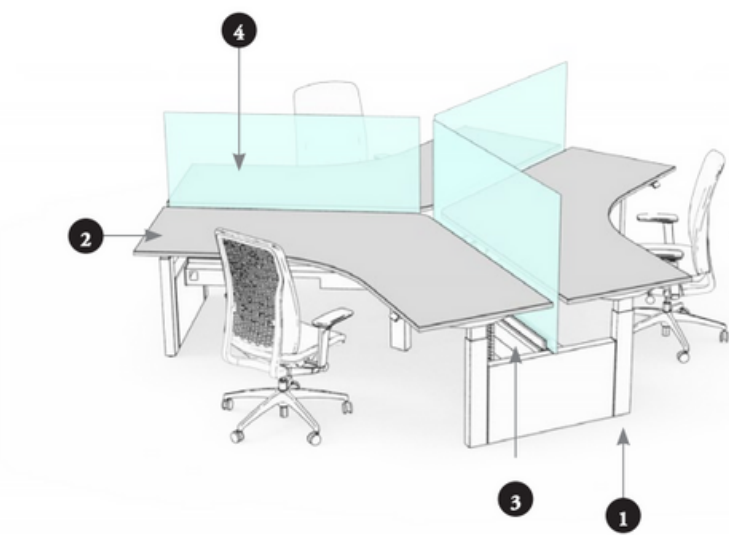
PULLMAN 3 SEAT

THIS AXON DISPLAYS THE CENTER ELEMENT ON THE THIRD FLOOR. AS
OTHER ELEMENTS SPIN OFF OF IT, A "NERVE NET" COMMUNICATION
METHOD IS PORTRAYED.
THIS SENSE OF MOVEMENT IS INSPIRED BY THE FLAWLESS MOVEMENT
OF A JELLYFISH.

SPECIFICATIONS

navigate height-adjustable bench typicals (continued)

navigate height-adjustable sit-stand bench 05
9'6" x 11'



- 1 Navigate 120 Frame, Standard Electrics frames provide users a collaborative workspace in a concise space with a height-adjustable range of 27" - 43".
- 2 Three Navigate 120 Worksurfaces complement the 120 frame to create a bench.
- 3 The Cable Channel manages and conceals power modules, harnesses, wiring and data and communication cables.
- 4 Fixed Center Screens mount to the cable channel and allow users full privacy in seated position while maintaining a uniform silhouette while the desks are at different heights.

QUANTITY	COMPONENTS	DESCRIPTION	LIST PRICE	EXTENDED PRICE
1	HNBCCMMT2B	Navigate 120 Mid Cover-Metal, w/o Power Pole, Dual-Sided-Standard	353	353
3	HNBCFG5158F	Navigate Fixed Center Screen - Glass, 51"h x 58"w, Full	1002	3006
3	HNBCGEMN60B	Navigate End Gable - Metal, 60"d, Dual-Sided - Standard	213	639
1	HNBEBC	Navigate Base Feed Cover	248	248
1	HNBEBF8T072E	Navigate Base Feed, 8 Wire Isolated Ground, 72"l, End Condition	322	322
3	HNBEED	Navigate e-Chain Vertical Cable Manager	203	609
1	HNBEPH8T048	Navigate Power Harness, 8 Wire Isolated Ground, 48"l	173	173
2	HNBEPMT	Navigate Power Module, Horizontal Application	273	546
6	HNBEROS	Navigate Receptacle Outlet, Standard 15 Amp	31	186
3	HNBFNCB58	Navigate Wire Channel, Dual-Sided - Standard, 58"w	652	1956
1	HNBFNT7S6058	Navigate 120 Frame, Standard Electrics (27"-43"), 60"d x 58"w	10215	10215
3	HNBTN29582	Navigate 120 Worksurface, 29"d x 58"w, Square	1433	4299
TOTAL			22552	LIST

Finishes: Foundation Laminate for Worksurfaces and Foundation colors for Frame.

*Seating: Around Chairs (NARTNPD) shown, Work Chairs are not included in price.

navigate height-adjustable bench typicals (continued)

navigate height-adjustable bench 02
5' x 17'6"



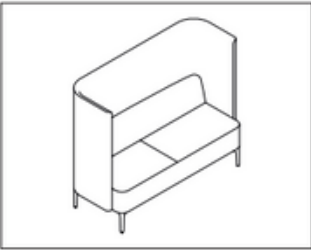
- 1 Standard Range frames provide users an electric sit-stand workstation with a height-adjustable range of 27" - 43".
- 2 End and Mid covers are available in a variety of colors to allow for a unique color palette.
- 3 The Power Module is mounted below the Wire Channel to provide users with accessible wire management and power locations.
- 4 Desk Edge Screens mount flush to the worksurface and move with the worksurface to allow users full privacy in seated and standing working heights.

QUANTITY	COMPONENTS	DESCRIPTION	LIST PRICE	EXTENDED PRICE
2	HNBCCEMN60B	Navigate End Cover - Metal, 60"d, Dual-Sided - Standard	80	160
2	HNBCCMMN602B	Navigate Mid Cover - Metal, 60"d, w/o Power Pole, Dual-Sided - Standard	98	196
6	HNBCDF1370	Navigate Desk Edge Screen - Fabric, 13"h x 70"w	806	4836
1	HNBEBC	Navigate Base Feed Cover	248	248
1	HNBEBF8T072E	Navigate Base Feed, 8 Wire Isolated Ground, 72"l, End Condition	322	322
6	HNBEED	Navigate e-Chain Vertical Cable Manager	203	1218
2	HNBEPH8T060	Navigate Power Harness, 8 Wire Isolated Ground, 60"l	179	358
3	HNBEPMT	Navigate Power Module, Horizontal Application	273	819
12	HNBEROS	Navigate Receptacle Outlet, Standard 15 Amp	31	372
3	HNBFNCB70	Navigate Wire Channel, Dual-Sided - Standard, 70"w	712	2136
3	HNBFNA7S6070	Navigate Frame, Standard Electric (27"-43"), 60"d x 70"w	5256	15768
2	HNBFNF	Frame Link	118	236
6	HNBWRN29702	Navigate Rectangular Worksurface, 28"d x 70"w, Square	519	3114
TOTAL			29783	LIST

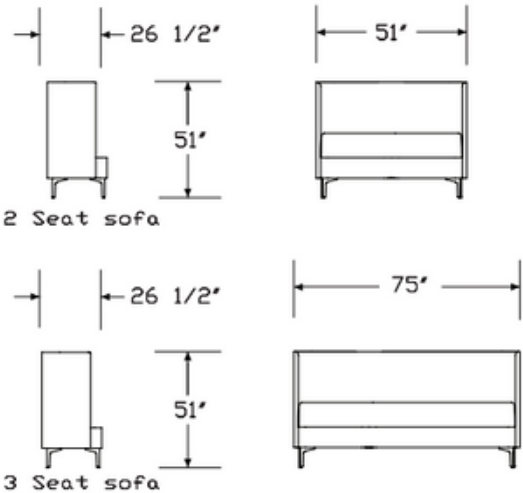
Finishes: Foundation Laminate for Worksurfaces and Foundation colors for Frame.

*Around Chairs (NARTNPD) shown, Work Chairs are not included in price.

Pullman SofaNOPUL

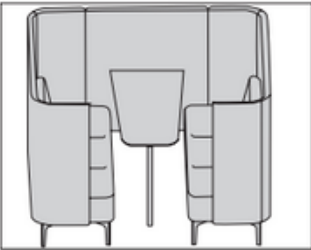


Product Information			
Description			
The Pullman sofa is upholstered over a plywood inner frame topped with high quality foams. Pullman can be upholstered in a single fabric or multiple fabrics. Legs are laser cut folded mild steel and solid wood. Tablet top is CNC cut from white melamine faced medium-density fiberboard or oak and walnut veneer.			
Notes			
Customer's Own Material (COM) requires the following yardage:			
Type	Total	Inner & Seat	Outer
7	11	4	7
8	14	5	9
Customer's Own Leather (COL) requires the following square feet:			
Type	Total	Inner & Seat	Outer
7	176	64	112
8	224	80	144
Dimensions			



Specification Information								
Step 1.								
NOPUL <input type="checkbox"/>								
Step 2. Type								
7	2 seat sofa		<input type="checkbox"/>					
8	3 seat sofa		<input type="checkbox"/>					
Step 3. Upholstery								
1	single fabric		<input type="checkbox"/>					
2	multiple fabric		<input type="checkbox"/>					
Step 4. Power Access Cut-out								
For 2 seat sofa (7) or 3 seat sofa (8)								
OCS	no cut-out system		<input type="checkbox"/>					
WNDB	with node cut-out system (both sides)		<input type="checkbox"/>					
WNDL	with node cut-out system (left hand side)		<input type="checkbox"/>					
WNDR	with node cut-out system (right hand side)		<input type="checkbox"/>					
Step 5. Tablet Arm Option								
For 2 seat sofa (7) or 3 seat sofa (8)								
00	no tablet arm		<input type="checkbox"/>					
RB	black tablet arm to right side (users POV)		<input type="checkbox"/>					
LB	black tablet arm to left side (users POV)		<input type="checkbox"/>					
BB	black tablet arm to both sides		<input type="checkbox"/>					
RW	white tablet arm to right side (users POV)		<input type="checkbox"/>					
LW	white tablet arm to left side (users POV)		<input type="checkbox"/>					
BW	white tablet arm to both sides		<input type="checkbox"/>					
Prices for Steps 1-5.								
			OCS00	OCSRB	OCSLB	OCSBB	OCSRW	OCSLW
NOPUL	7	1	\$7253	7724	7724	7724	7724	7724
		2	\$7253	7724	7724	7724	7724	7724
	8	1	\$8280	8751	8751	8751	8751	8751
		2	\$8280	8751	8751	8751	8751	8751
			OCSBW	WNDB00	WNDBRB	WNDBLB	WNDBBB	WNDBRW
NOPUL	7	1	\$7724	7653	8124	8124	8124	8124
		2	\$7724	7653	8124	8124	8124	8124
	8	1	\$8751	8680	9151	9151	9151	9151
		2	\$8751	8680	9151	9151	9151	9151
			WNDBLW	WNDBBW	WNDL00	WNDLRB	WNDLLB	WNDLBW
NOPUL	7	1	\$8124	8124	7653	8124	8124	8124
		2	\$8124	8124	7653	8124	8124	8124

Pullman BoothNOPUL



Product Information			
Description			
The Pullman booth is available in two-tone fabric. Inner fabric covers the seat and back on the inside of the booth and outer fabric covers the inner and outer walls of the booth.			
Notes			
Order accessory products separately:			
• White board (NOPULAWB)			
• TV bracket (NOPULATVB)			
• Power/data unit (NOPULAPAD)			
Customer's Own Material (COM) requires the following yardage:			
Type	Total	Inner & Seat	Outer
2	19	4	15
3	23	5	18
2W	21	4	17
3W	25	5	20
Customer's Own Leather (COL) requires the following square feet:			
Type	Total	Inner & Seat	Outer
2	286	62	224
3	356	86	270
2W	286	62	224
3W	356	86	270

Specification Information		
Step 1.		
NOPUL A		
Step 2. Type		
2	2-seat booth	A
2W	2-seat booth wide	A
3	3-seat booth	A
3W	3-seat booth wide	A
Prices for Steps 1-2.		
NOPUL	2	\$17639
	2W	\$18369
	3	\$20378
	3W	\$21108
Step 3. Base Finish		
R00	black RAL 9005	A +\$0
R02	stone grey RAL 7030	A +\$356
R03	silver - RAL 9006	A +\$356
R07	salmon RAL 3022	A +\$356
R08	traffic orange RAL 2009	A +\$356
R10	yellow RAL 1012	A +\$356
R13	pastel blue RAL 5024	A +\$356
R14	white RAL 9003	A +\$0
R23	black grey RAL 7021	A +\$356
R25	pale green RAL 6021	A +\$356
R26	traffic red RAL 3020	A +\$356
R27	sulphur yellow RAL 1016	A +\$356
R28	light pink RAL 3015	A +\$356
R29	dark blue RAL 5001	A +\$356
R30	oyster RAL 1013	A +\$356
OAK	oak	A +\$1214
WAL	walnut	A +\$2067