

# ARRAY BEHAVIORAL CARE

240 W BROUGHTON STREET, SAVANNAH GA 31401

Mc

Mary Claire Rossetti  
mrossetti@student.scpd.edu

ARRAY BEHAVIORAL CARE  
240 W. BROUGHTON STREET  
NERVE NET



NERVE NET

Cover Page

Project	Project Number
Date	Issue Date
Drawn By	Author
Checked By	Checker
G001	
Scale	

2/25/2021 3:40:33 PM



## Symbols Legend

	North Arrow		Column Grid
	ADA Turn Radius		ADA Clear Floor Space
	Room Tag		Wall Type
	Section Marker		Interior Elevation Marker
	Detail Callout		

## General Abbreviations

ACS	Acoustic Ceiling System	CH	Chair
AFF	Above Finished Floor	TB	Table
RCP	Reflected Ceiling Plan	WS	Work Station
PT	Paint	CW	Casework
CPT	Carpet		
LVT	Luxury Vinyl Tile		

Sheet Name	Sheet Number
Cover Page	G001
Life Safety Plan	G101
Floor Plan- 3rd Floor	A101
Floor Plan- 4th Floor	A102
RCP- 3rd Floor	A103
RCP- 4th Floor	A104
Building Section	A301
Furniture Plan- 3rd Floor	I101
Furniture Plan- 4th Floor	I102
Floor Finish Plan- 3rd Floor	I103
Floor Finish Plan- 4th Floor	I104
Wall Elevations	I201
Large Scale Finish Plan	I401
Large Scale Power & Data	I402
Large Scale Furniture plan with Specs.	I403
Millwork Details	I501

Mc

Mary Claire Rossetti  
mrossetti@student.scsd.edu

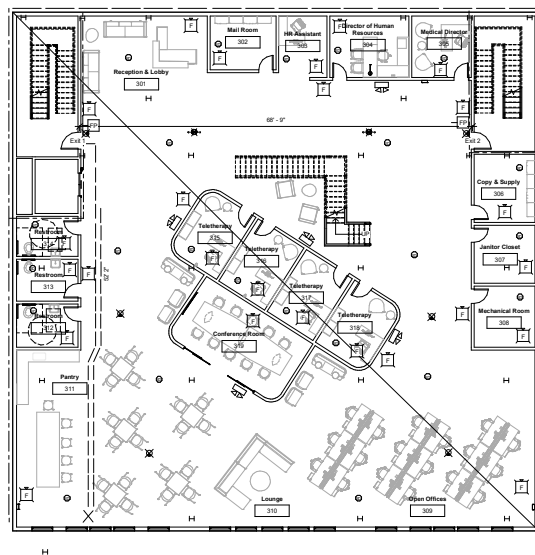
ARRAY BEHAVIORAL CARE  
240 W. BROUGHTON STREET  
NERVE NET



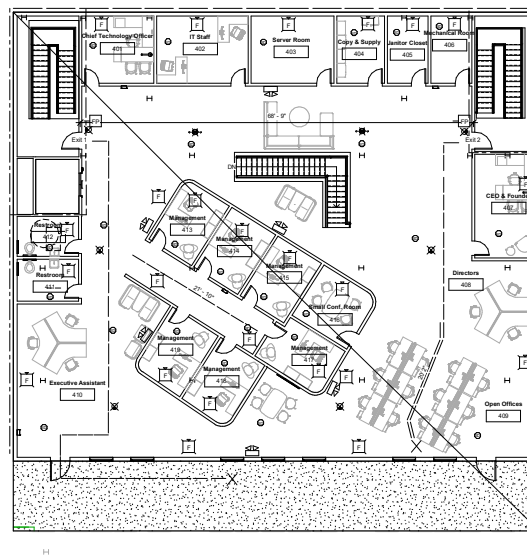
NERVE NET

Life Safety Plan

Project	Project Number
Date	Issue Date
Drawn By	Author
Checked By	Checker
G101	
Scale	1/8" = 1'-0"



Life Safety Plan 3rd Floor  
1/8" = 1'-0"



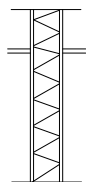
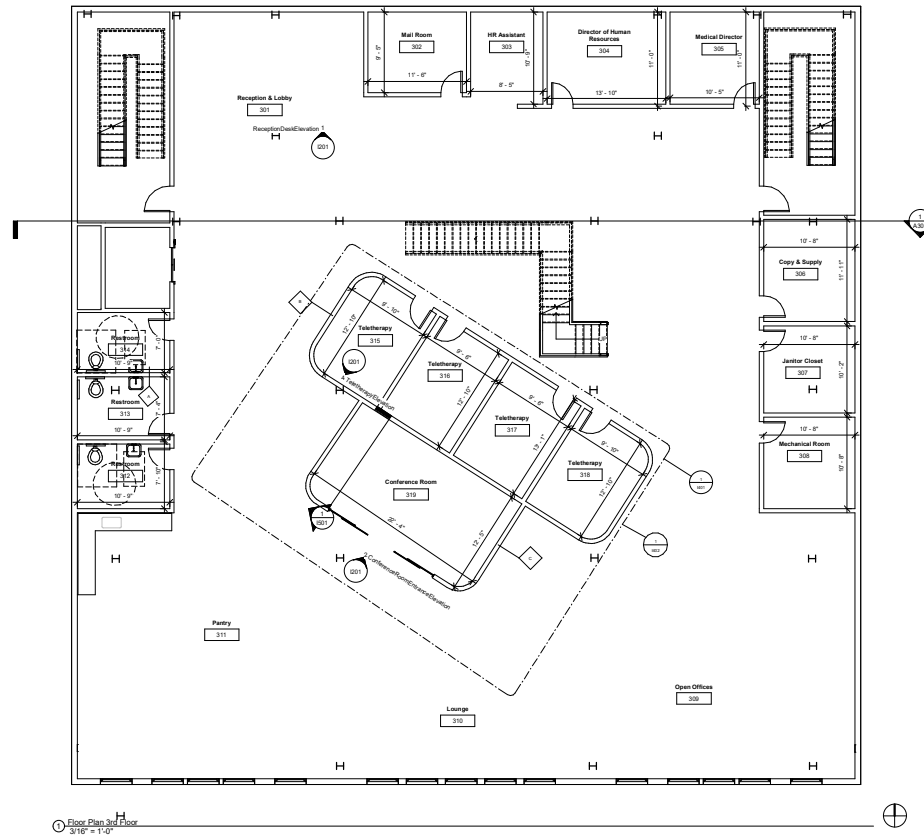
Life Safety Plan 4th Floor  
1/8" = 1'-0"

# SYMBOLS LEGEND

- Exit Sign
- Smoke Detector
- Alarm Systems
- Manual Alarm Systems
- Emergency Lighting
- 1 HR Rated Wall
- 2 HR Rated Wall
- Fire Extinguisher Cabinet

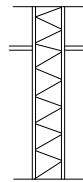
OCCUPANCY LOAD	EGRESS NOTES	PLUMBING FIXTURE COUNT	APPLICABLE CODES
<p>Business: 150 Load Factor</p> <p>Third Floor: 8077 sq. ft. = 54 Occupants</p> <p>Fourth Floor: 6967 sq. ft. = 47 Occupants</p>	<p>Overall Diagonal on Both Floors : 128' 0"</p> <p>Exit Separation on Both Floors : 68' 9"</p> <p>Third Floor: Common path of travel: Allowed = 100' Actual = 52' 2"</p> <p>Travel Distance: Allowed = 300' Actual = 64' 1"</p> <p>Fourth Floor: Common path of travel: Allowed = 100' Actual = 20' 2"</p> <p>Travel Distance: Allowed = 300' Actual = 59'</p> <p>Dead End Corridor: Allowed = 50' Actual = 21' 10"</p>	<p>Third Floor: Water Closets Required = 3 Provided = 3 Water Fountain Required = 1 Provided = 1</p> <p>Fourth Floor: Water Closets Required = 2 Provided = 2 Water Fountain Required = 1 Provided = 1</p>	<p>CITY OF SAVANNAH</p> <p>International Building Code : 2018 Edition</p> <p>Life Safety Code, NFPA 101 : 2018 Edition</p> <p>Building is Equipped with automatic sprinkler system</p>

2/25/2021 3:44:04 PM



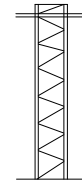
A

Non-rated, slab to underside of structure, acoustically insulated. 1/2" water resistant GWB two sides. Metal Studs 16" o.c.



B

Non-rated, slab to underside of structure, acoustically insulated. 1/2" GWB both sides. Metal studs 16" o.c.



C

Non-rated, slab to 6" past finished ceiling, acoustically insulated. 1/2" GWB both sides. Metal studs 16" o.c.

Mc

Mary Claire Rossetti  
mrossetti@student.scpd.edu

ARRAY BEHAVIORAL CARE  
240 W. BROUGHTON STREET  
NERVE NET

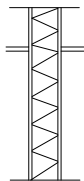
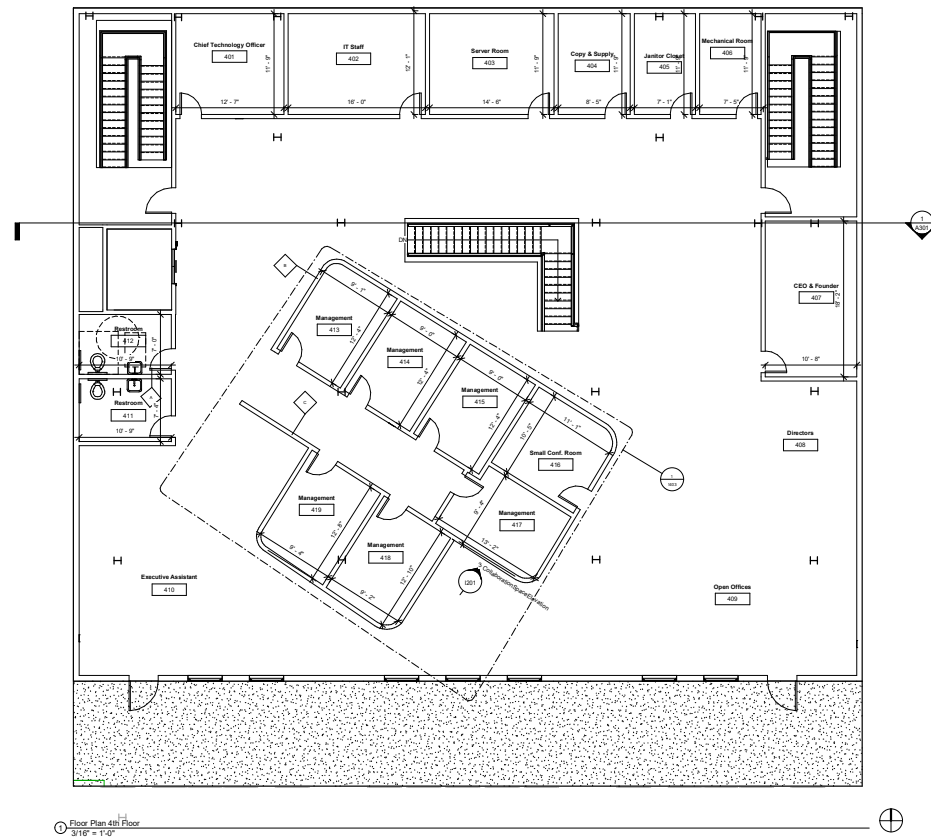


NERVE NET

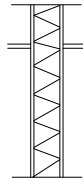
Floor Plan - Third Floor

Project	Project Number
Date	Issue Date
Drawn By	Author
Checked By	Checker
A101	
Scale	3/16" = 1'-0"

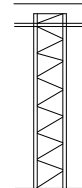
2/25/2021 3:41:44 PM



Non-rated, slab to underside of structure, acoustically insulated. 1/2" water resistant GWB one side. 1/2" GWB one side. Metal Studs 16" o.c.



Non-rated, slab to underside of structure, acoustically insulated. 1/2" GWB both sides. Metal studs 16" o.c.



Non-rated, slab to 6" past finished ceiling, acoustically insulated. 1/2" GWB both sides. Metal studs 16" o.c.

Mc

Mary Claire Rossetti  
mrossetti@student.scpd.edu

ARRAY BEHAVIORAL CARE  
240 W. BROUGHTON STREET  
NERVE NET



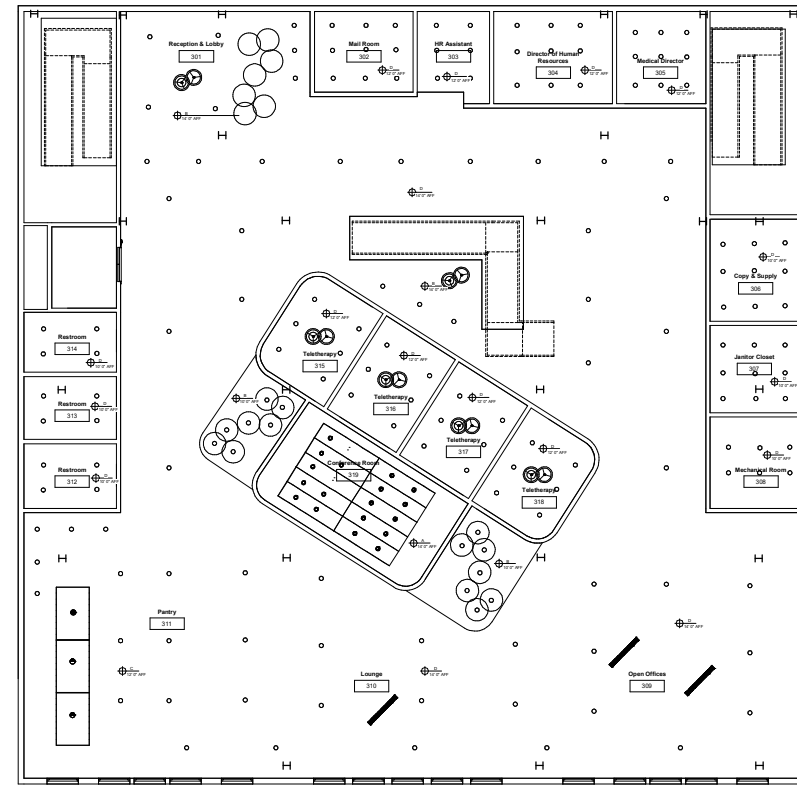
NERVE NET

Floor Plan - Fourth Floor

Project	Project Number
Date	Issue Date
Drawn By	Author
Checked By	Checker
A102	
Scale	3/16" = 1'-0"

2/25/2021 3:42:02 PM





Third Floor  
3/16" = 1'-0"

#### SYMBOLS LEGEND

- 4" Recessed
- ⊗ Round HALO Pendant
- Surge Linear Suspension
- ⊙ Vibia Pendant

Mc

Mary Claire Rossetti  
mrossetti@student.scpd.edu

ARRAY BEHAVIORAL CARE  
240 W. BROUGHTON STREET  
NERVE NET



NERVE NET

RCP - Third Floor

Project \_\_\_\_\_ Project Number \_\_\_\_\_  
Date \_\_\_\_\_ Issue Date \_\_\_\_\_  
Drawn By \_\_\_\_\_ Author \_\_\_\_\_  
Checked By \_\_\_\_\_ Checker \_\_\_\_\_

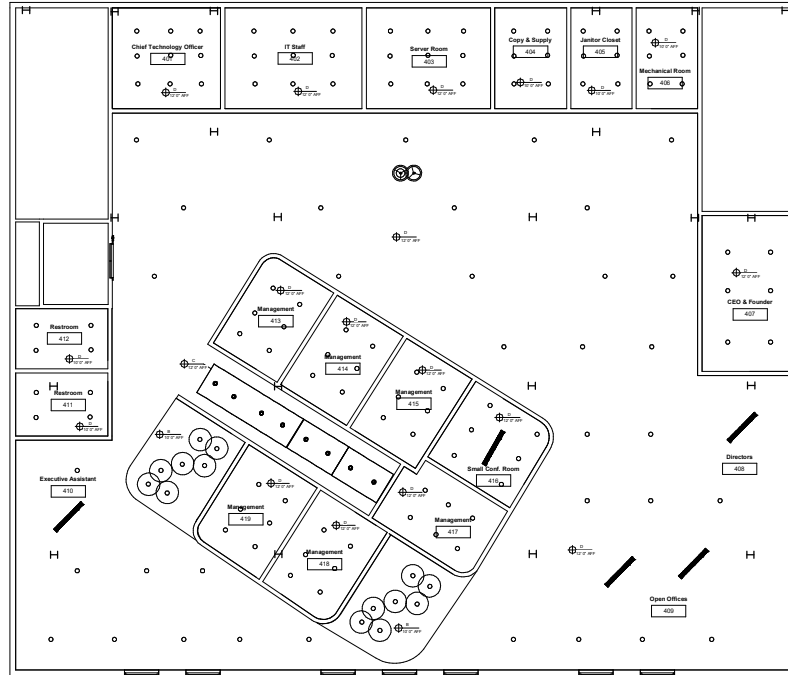
A103

Scale 3/16" = 1'-0"

2/25/2021 3:42:22 PM

SYMBOL	TAG	COMPANY	BULB TYPE	LUMEN & WATTAGE
○	L-1	Lutron Electrics	LED	700-1000 L, 15-34 W
⊗	L-2	Vibia	LED	3166 L, 46 W
—	L-3	Tech Lighting	LED	2694 L, 52 W
⊙	L-4	Vibia	LED	312.28 L, 3.15 W

TAG	COMPANY	TYPE	NOTES
A	Armstrong	Serpentina Waves	Easy Installation, can be joined to create wave effect
B	Armstrong	Optima L Canopy Small Circle	High levels of sound absorption, suspended ceiling
C	Armstrong	Optima Curved Canopy-Convex	Modular suspended ceiling system
D	Armstrong	ACOUSTIBuilt Seamless Acoustical Ceiling System	Total Acoustics, Quick installation, Flexible design preferences



SYMBOLS LEGEND

○ 4" Recessed

⊗ Round HALO Pendant

— Surge Linear Suspension

○ Fourth Floor  
3/16" = 1'-0"

SYMBOL	TAG	COMPANY	BULB TYPE	LUMEN & WATTAGE
○	L-1	Lutron Electrics	LED	700-1000 L, 15-34 W
⊗	L-2	Vibia	LED	3166 L, 46 W
—	L-3	Tech Lighting	LED	2694 L, 52 W
⊙	L-4	Vibia	LED	312.28 L, 3.15 W

TAG	COMPANY	TYPE	NOTES
A	Armstrong	Serpentina Waves	Easy Installation, can be joined to create wave effect
B	Armstrong	Optima L Canopy Small Circle	High levels of sound absorption, suspended ceiling
C	Armstrong	Optima Curved Canopy-Convex	Modular suspended ceiling system
D	Armstrong	ACOUSTIBuilt Seamless Acoustical Ceiling System	Total Acoustics, Quick installation, Flexible design preferences

Mc

Mary Claire Rossetti  
mrossetti@student.scpd.edu

ARRAY BEHAVIORAL CARE  
240 W. BROUGHTON STREET  
NERVE NET

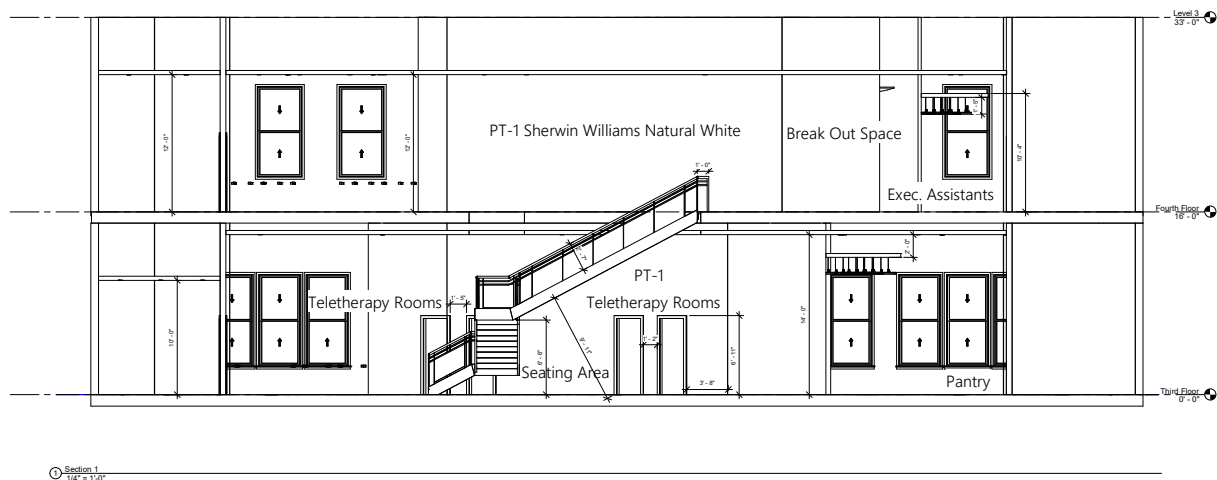


NERVE NET

RCP - Fourth Floor

Project	Project Number
Date	Issue Date
Drawn By	Author
Checked By	Checker
<b>A104</b>	
Scale	3/16" = 1'-0"

2/25/2021 3:42:42 PM



Mc

Mary Claire Rossetti  
mrossetti@student.scpd.edu

ARRAY BEHAVIORAL CARE  
240 W. BROUGHTON STREET  
NERVE NET

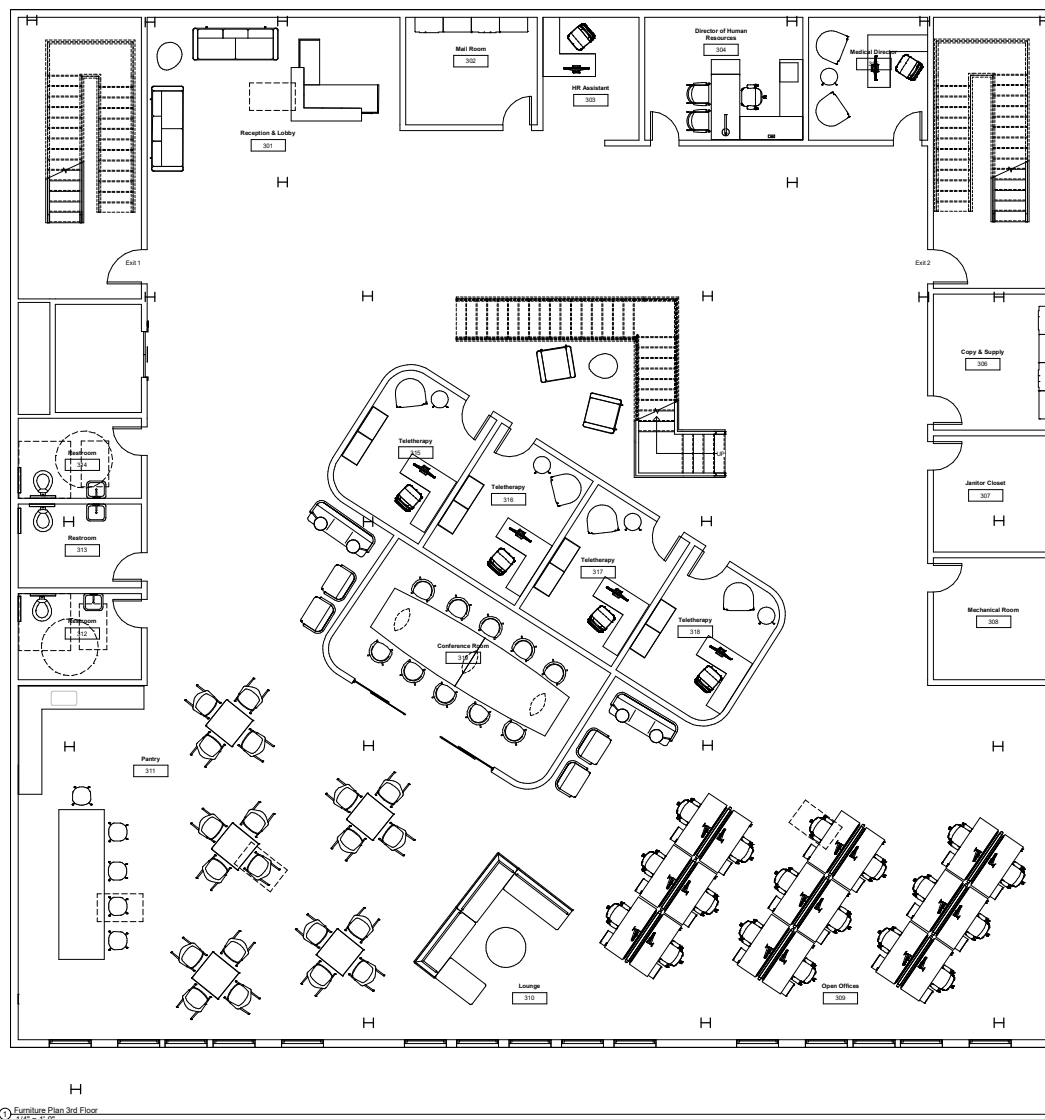


NERVE NET

Building Section

Project	Project Number
Date	Issue Date
Drawn By	Author
Checked By	Checker
A301	
Scale	1/4" = 1'-0"

2/25/2021 3:40:05 PM



Mc

Mary Claire Rossetti  
mrossetti20@student.scpd.edu

ARRAY BEHAVIORAL CARE  
240 W. BROUGHTON STREET  
NERVE NET

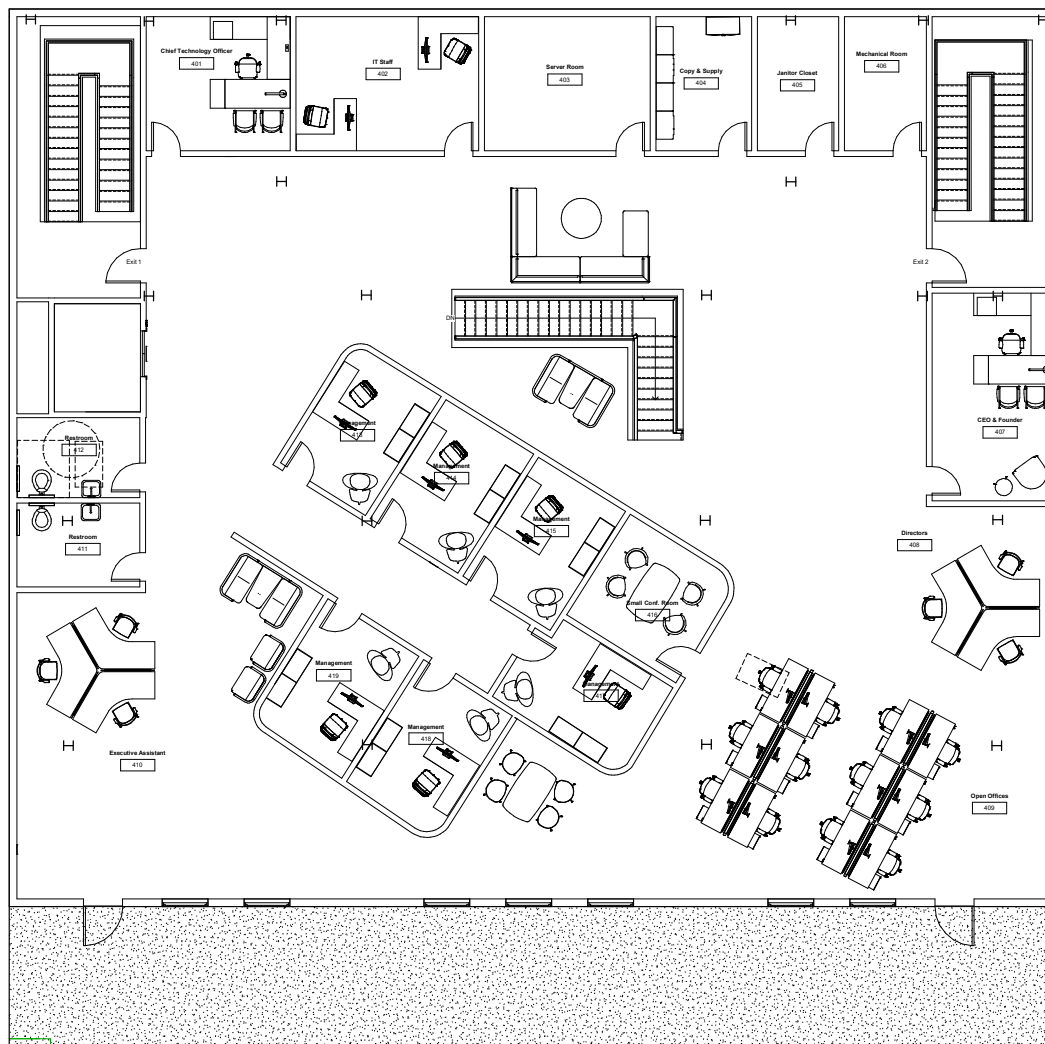


NERVE NET

Furniture Plan -  
Third Floor

Project	Project Number
Date	Issue Date
Drawn By	Author
Checked By	Checker
I101	
Scale	1/4" = 1'-0"

2/25/2021 3:44:26 PM



1 Furniture Plan 4th Floor  
1/4" = 1'-0"

Mc

Mary Claire Rossetti  
mrossetti@student.scpd.edu

ARRAY BEHAVIORAL CARE  
240 W. BROUGHTON STREET  
NERVE NET

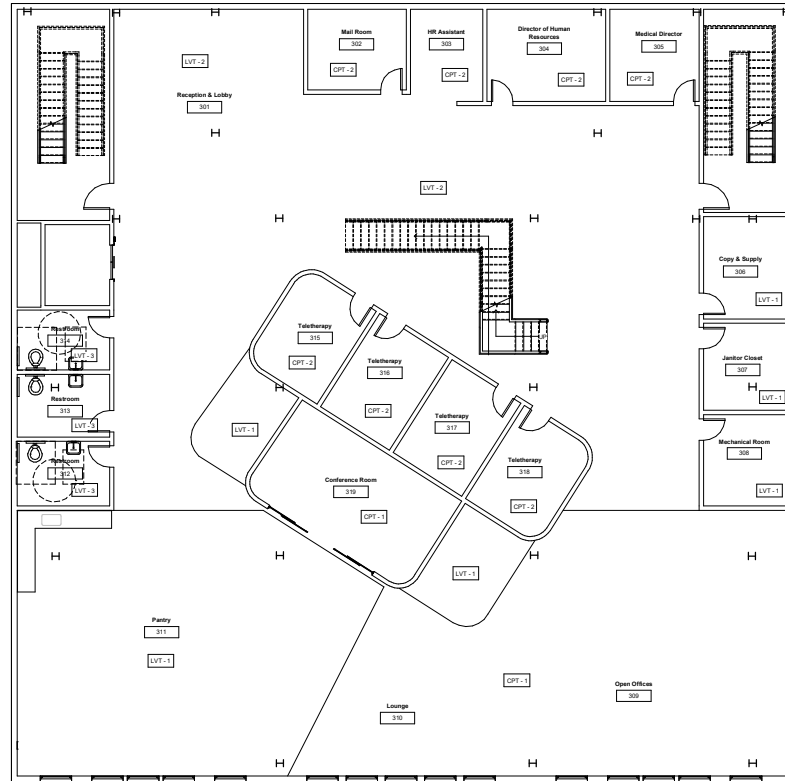


NERVE NET

Furniture Plan -  
Fourth Floor

Project	Project Number
Date	Issue Date
Drawn By	Author
Checked By	Checker
1102	
Scale	1/4" = 1'-0"

2/25/2021 3:44:45 PM



Finish Plan - 3rd Floor  
3/16\" = 1'-0"



TAG	MANUFACTURER	NAME	COLOR	SIZE	SURFACE	INSTALL	NOTES
CPT- 1	Shaw Contract	Beyond	Cliff	12 ft.	Floor	Direct Glue, Double Glue, Stretch-in	Heightened perspective, deeper connection to landscapes, Broadloom
CPT- 2	Shaw Contract	Presence Tile	Status Ivory	18 in. x 36 in.	Floor	Brick	Mood setting, unexpected, abstract form, fiber eco solution
LVT- 1	Shaw Contract	Surface	Quartz	18 in. x 36 in.	Floor	Herringbone	Air balance, linear stone, 2.5 mm thickness, durable and heavy
LVT- 2	Shaw Contract	Amalgam	Onyx	20 in. x 20 in.	Floor	Monolithic	5 mm thickness, Built to perform, Industrial look
LVT- 3	Shaw Contract	Shear	Grigio	18 in. x 18 in.	Floor	Quarter turn	5 mm thickness, performance of resilient flooring, easy installation

Mc

Mary Claire Rossetti  
mrossetti@student.sacast.edu

ARRAY BEHAVIORAL CARE  
240 W. BROUGHTON STREET  
NERVE NET

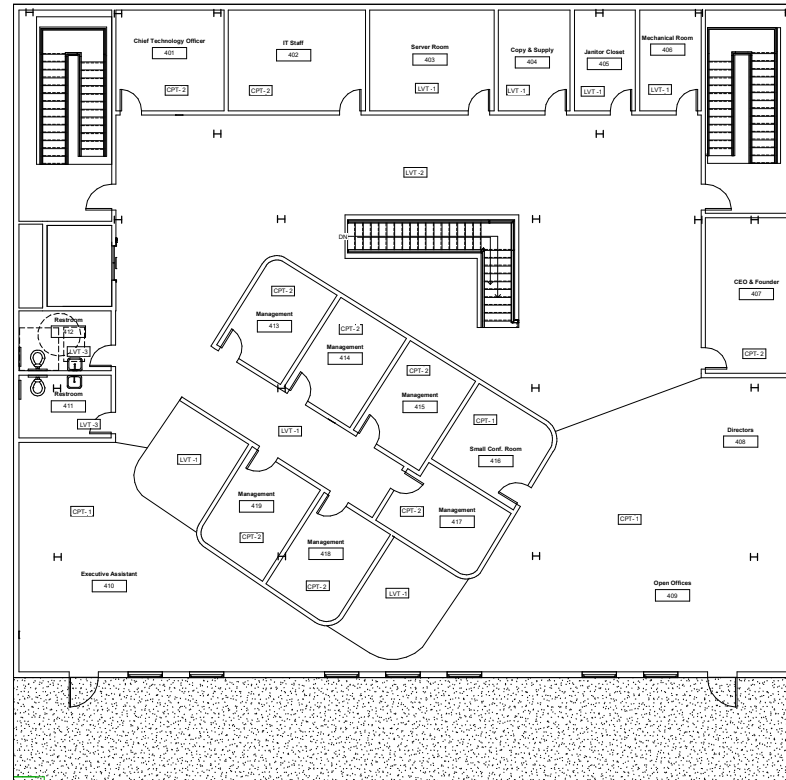


NERVE NET

Floor Finish Plan -  
Third Floor

Project	Project Number
Date	Issue Date
Drawn By	Author
Checked By	Checker
I103	
Scale	3/16\" = 1'-0"

2/25/2021 3:45:05 PM



Finish Plan 4th Floor  
3/16" = 1'-0"

TAG	MANUFACTURER	NAME	COLOR	SIZE	SURFACE	INSTALL	NOTES
CPT- 1	Shaw Contract	Beyond	Cliff	12 ft.	Floor	Direct Glue, Double Glue, Stretch-in	Heightened perspective, deeper connection to landscapes, Broadloom
CPT- 2	Shaw Contract	Presence Tile	Status Ivory	18 in. x 36 in.	Floor	Brick	Mood setting, unexpected & abstract form, fiber eco solution
LVT- 1	Shaw Contract	Surface	Quartz	18 in. x 36 in.	Floor	Herringbone	Air balance, linear stone, 2.5 mm thickness, durable and heavy
LVT- 2	Shaw Contract	Amalgam	Onyx	20 in. x 20 in.	Floor	Monolithic	5 mm thickness, Built to perform, Industrial look
LVT- 3	Shaw Contract	Shear	Grigio	18 in. x 18 in.	Floor	Quarter turn	5 mm thickness, performance of resilient flooring, easy installation

Mc

Mary Claire Rossetti  
mrossetti@student.scpd.edu

ARRAY BEHAVIORAL CARE  
240 W. BROUGHTON STREET  
NERVE NET

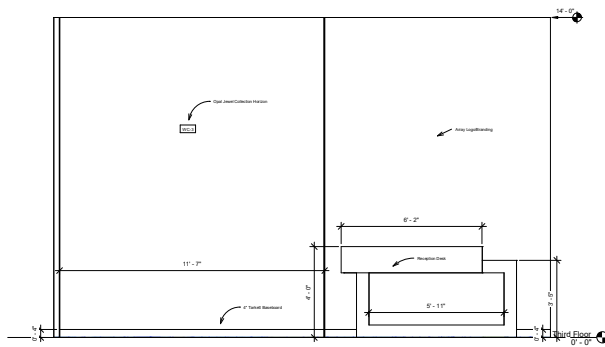


NERVE NET

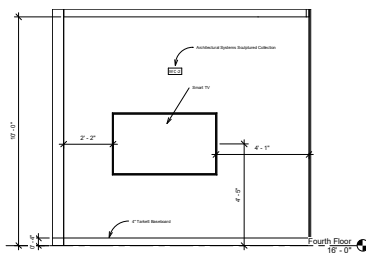
Floor Finish Plan -  
Fourth Floor

Project	Project Number
Date	Issue Date
Drawn By	Author
Checked By	Checker
1104	
Scale	3/16" = 1'-0"

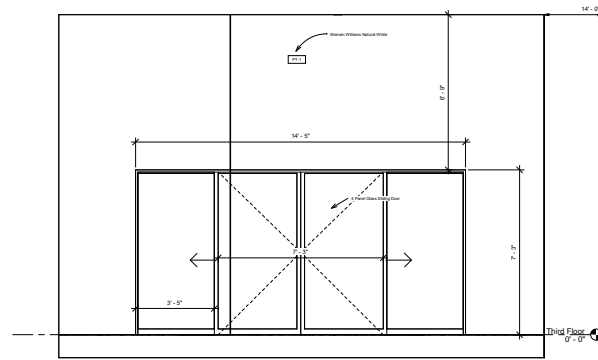
2/25/2021 3:45:26 PM



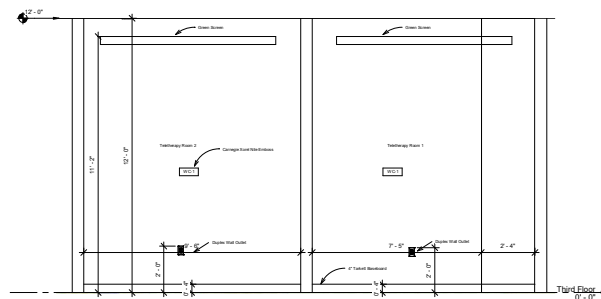
① ReceptionDeskElevation  
1/2" = 1'-0"



③ CollaborationSpaceElevation  
1/2" = 1'-0"



② ConferenceRoomEntranceElevation  
1/2" = 1'-0"



④ Teletherapy Elevation  
1/2" = 1'-0"



Mary Claire Rossetti  
mrosse20@student.scad.edu

ARRAY BEHAVIORAL CARE  
240 W. BROUGHTON STREET  
NERVE NET



NERVE NET

## Wall Elevations

Project	Project Number
Date	Issue Date
Drawn By	Author
Checked By	Checker
1201	
Scale	1/2" = 1'-0"

2/25/2021 3:59:26 PM



Mc

Mary Claire Rossetti  
mrossetti20@student.scpd.edu

ARRAY BEHAVIORAL CARE  
240 W. BROUGHTON STREET  
NERVE NET

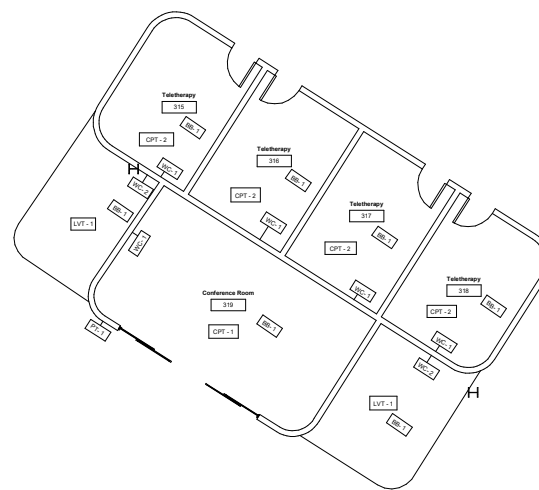


NERVE NET

Large Scale Finish  
Plan

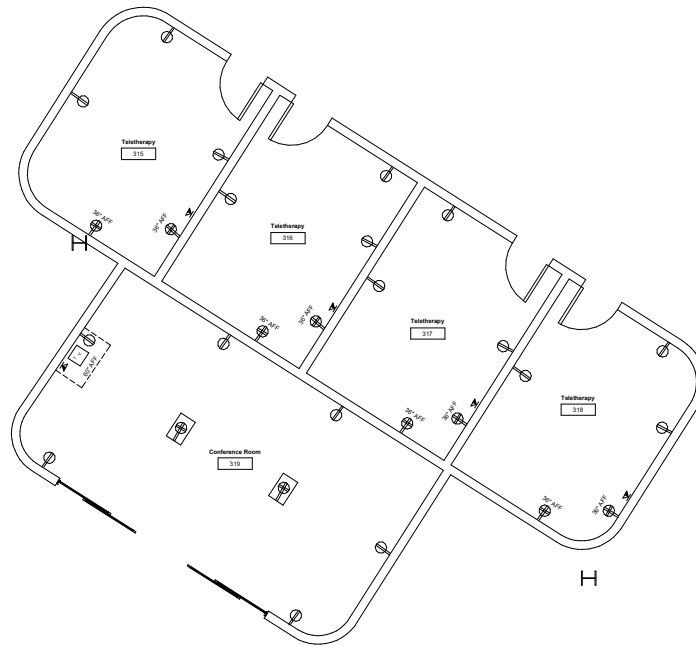
Project	Project Number
Date	Issue Date
Drawn By	Author
Checked By	Checker
<b>I401</b>	
Scale	1/4" = 1'-0"

2/25/2021 3:46:03 PM



Enlarged Finish Plan - 3rd Floor  
1/4" = 1'-0"

TAG	MANUFACTURER	NAME	COLOR	SIZE	SURFACE	INSTALL	NOTES
CPT- 1	Shaw Contract	Beyond	Cliff	12 ft.	Floor	Direct Glue, Double Glue, Stretch-in	Heightened perspective, deeper connection to landscapes, Broadloom
CPT- 2	Shaw Contract	Presence Tile	Status Ivory	18 in. x 36 in.	Floor	Brick	Mood setting, unexpected, abstract form, fiber eco solution
LVT- 1	Shaw Contract	Surface	Quartz	18 in. x 36 in.	Floor	Herringbone	Air balance, linear stone, 2.5 mm thickness, durable and heavy
WC- 1	Carnegie	Xorel Nile Emboss	705	N/A	Wall	Embossed, Woven	Bleach Cleanable & Water-Based/Solvent
WC- 2	Architectural Systems	Sculptured Collection	White	N/A	Wall	Embossed, Panel Wallcovering	Sustainable, textured pattern, strong statement, 100% recycled cardboard
PT-1	Sherwin Williams	Natural White	SW 9542	N/A	Wall	Paint	Neutral, eggshell finish, durable
BB-1	Tarkett/Johnsonite	Platinum 21 Cove 4"	CB21	4" x 120' Roll	Wall	Glue Down	Traditional Wall Base, Vinyl, 1/8" Thickness



SYMBOLS LEGEND

- Duplex Outlet
- Quad Outlet
- Floor Quad Outlet
- Television Wall Outlet
- Voice/ Data Outlet

\*Unless Otherwise noted, outlets are mounted 18" AFF

① Large Scale Power Data- 3rd Floor  
3/8" = 1'-0"

Mc

Mary Claire Rossetti  
mrossetti@student.scpd.edu

ARRAY BEHAVIORAL CARE  
240 W. BROUGHTON STREET  
NERVE NET

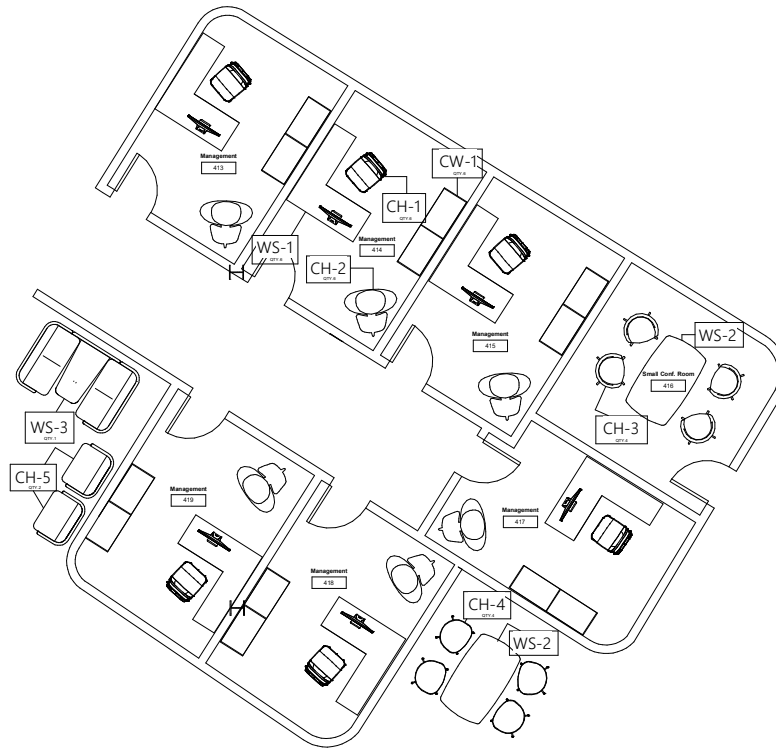


NERVE NET

Large Scale Power  
and Data Plan

Project	Project Number
Date	Issue Date
Drawn By	Author
Checked By	Checker
1402	
Scale	3/8" = 1'-0"

2/25/2021 3:46:19 PM



Enlarged Furniture Plan-4th Floor  
3/8" = 1'-0"

TAG	COMPANY	NAME	COLOR	SIZE	MATERIAL	QTY	NOTES
CH-1	Steelcase	Viv Highback Chair	Navy Blue	525x640x1025-1125	Fabric	6	Management Team Offices
CH-2	Steelcase	Coalesse Shell Oak	Shell Oak	3' x 2'	Wood, Upholstery	6	Management Team Offices
WS-1	RevitCity	L- Shaped Office Desk	White	5' x 4' x 2'	Laminate	6	Management Team Offices
CW-1	Herman Miller	H- Frame Credenza	Oak	5' x 1'	Wood	6	Management Team Offices
CH-3	Steelcase	Coalesse 4 Star	Light Grey	1' 10" x 1'8"	Upholstered Seat	4	Small Conference Room
WS-2	Herman Miller	Headway Conf. Table	Oak	36" x 60"	Wood	2	Small Conf. Room & Break Out
CH-4	Herman Miller	About A Chair	Navy Blue	31.1" x 23.2" x 20.5"	Upholstery	4	Break out Space
CH-5	Herman Miller	Pullman Chair	Navy Blue	51" x 35.5" x 26.5"	Fabric	2	Break out Space
WS-3	Herman Miller	Pullman Booth- 2 Seat	Light Grey	51" x 51"	Fabric	1	Break out Space

Mc

Mary Claire Rossetti  
mrossetti@student.sacd.edu

ARRAY BEHAVIORAL CARE  
240 W. BROUGHTON STREET  
NERVE NET



NERVE NET

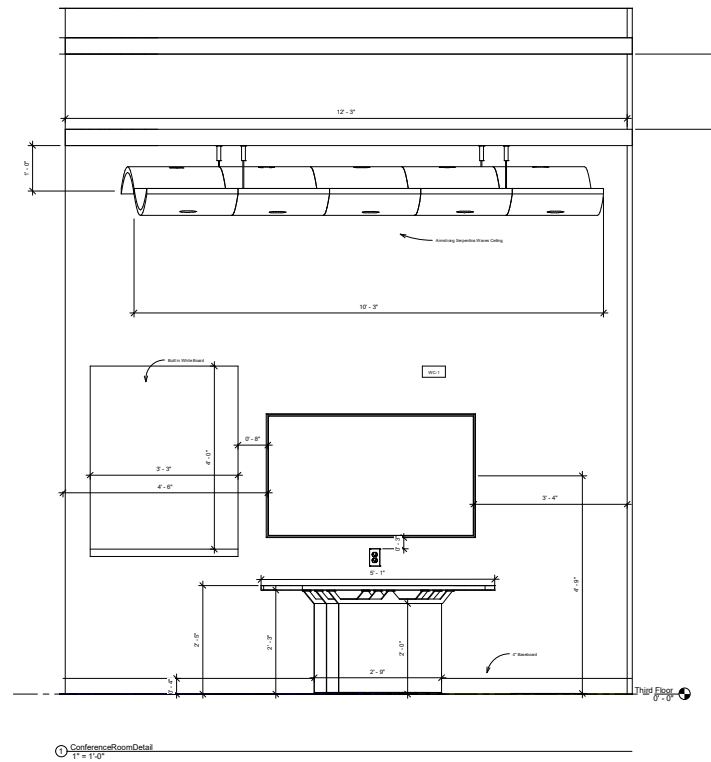
Large Scale Furniture  
plan with  
Specifications

Project \_\_\_\_\_ Project Number \_\_\_\_\_  
Date \_\_\_\_\_ Issue Date \_\_\_\_\_  
Drawn By \_\_\_\_\_ Author \_\_\_\_\_  
Checked By \_\_\_\_\_ Checker \_\_\_\_\_

1403

Scale \_\_\_\_\_ 3/8" = 1'-0"

2/25/2021 3:46:38 PM



Mc

Mary Claire Rossetti  
mrossetti@student.scpd.edu

ARRAY BEHAVIORAL CARE  
240 W. BROUGHTON STREET  
NERVE NET



NERVE NET

Millwork Details

Project	Project Number
Date	Issue Date
Drawn By	Author
Checked By	Checker
1501	
Scale	1" = 1'-0"

2/25/2021 3:46:57 PM